

# KKF 4-SL

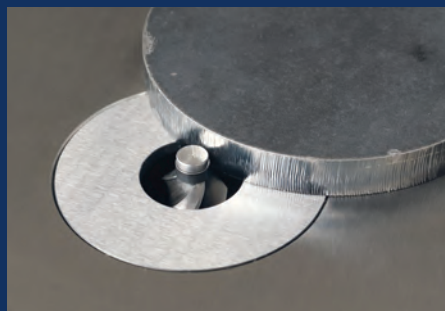
## Chamfering Machine for Contours

The spindle bearings installed under preload give the KKF 4-SL highly accurate concentricity. Both solid carbide cutters and milling cutters with inserts can be used to achieve excellent tool life.



### Applications

- ▶ Minimum workpiece thickness 1 mm
- ▶ Can be used for steel, hardened steel, aluminium, brass, copper, plastic, from soft plastic to acrylic glass, wood and much more
- ▶ Chamfering or rounding of external and internal contours
- ▶ Automatic feed for bigger workpieces





KKF 4-SL with undercarriage

Further accessories can be found in our **Accessory Catalogue**.

### Professional advantages

- ▶ Big supporting table
- ▶ Very good concentricity
- ▶ Can be used in continuous operation due to belt transmission
- ▶ Tool change within a few seconds
- ▶ Extraction socket
- ▶ Milling cutter infeed through parallel table plate adjustment

### Features

- ✔ Precise chamfer adjustment by micrometer screw
- ✔ Chamfer angle can be changed due to contour cutter with different point angles
- ✔ Fast tool change
- ✔ Wide selection of cutters
- ✔ Infinitely variable speed regulation
- ✔ Hardened machine table with extraction socket


### Options

- ✔ Mobile undercarriage with big rubber rollers
- ✔ Prism attachment for straight edges
- ✔ Stop ruler
- ✔ Guide finger for the use of tapered contour cutters
- ✔ Extraction device
- ✔ Automatic feed
- ✔ Insert milling cutter with guide ball bearing from  $\varnothing$  10 mm

### Delivery contents

- ✔ Collet wrench
- ✔ Insert ring with borehole  $\varnothing$  30 mm
- ✔ Collet  $\varnothing$  6 mm, 8 mm, 10 mm, and 12 mm
- ✔ Union nut
- ✔ Operating manual

### Technical data

KKF 4-SL 

Motor	0.55 kW   6,000 – 26,000 rpm
Energy	400 V, 50-60 Hz
Maximum chamfer width	4 mm
Guide ball bearing	min. $\varnothing$ 6 mm
Dimensions (LxWxH)	490 × 340 × 430 mm
Tabletop	400 × 280 mm
Weight	55.8 kg
Item no.	63368



KKF 4-SL