



## PA/PA+/PC/PK/PO WIRE AND CABLE MARKING

- Customized multi-character marking on one single sleeve.
- Rational installation with one step mounting procedure saves time and marking costs.
- Transmission of marking data is made via e-mail, fax or regular mail.
- Flexible design, no wastage, reduced stock keeping.
- Packaging for different needs to speed up marking work on installation site.
- PA+ with unique patented grooves for easier mounting and flat top for improved readability.

### GENERAL INFORMATION

#### Design

Wire and cable marking with all information on one single sleeve. PA+ profile with unique patented grooves along the outside profile wall, reducing required mounting force by 30 – 50 %. For all ready connected wires customized PC- sleeves offer a very fast snap-on mounting. Selection between three packaging consisting of:

- 1) Semi detached unsorted sleeves in big loops,
- 2) Customized sorted according to project demands.
- 3) Sorted and put on a cardboard sheet for excellent overview, random picking and mounting order.

#### Material

Cadmium and silicon free soft or hard PVC according to Partex formula. Can also be delivered as halogen free customized markers. See separate product information!

#### Standard colours

Yellow and white, others on request.

#### Standard printing

Black etching ink jet printing. Alternatively thermal transfer and hot stamping print.

#### Text

Alphanumerical and special characters. For ink jet print character height 2.6 or 4.0 mm depending on marker type. Character width 1.8–2.0 mm depending on number of characters. Hot stamped text available on request (nb! Maximum 7 characters). PK also in large text and on double lines.

Thermal transfer print available in different font sizes but as standard approximately like ink jet print.

#### Marking types

- 1) Closed wire marking: PA+02, PA+1, PA+2, PA3 and PO. (PA3 can be delivered with 1-or 2-line text).
- 2) Open wire marking: PC-10, PC-20, PC-30, PC-40 and PC50.
- 3) Cable marking: PK2 and PO bigger sizes with one or two lines of text. PK2 25 mm, PK2 40 mm and PO-06 18 mm punched for direct mounting with cable ties.
- 4) PO series cable and wire marking from size PO 01 to size PO-28.

#### Temperature resistance

Shape permanence PY/ PA+/PC/PK/PO from –30°C to +60°C (–22°F to +140°F).

#### Marking information

Transfer of marking information to Partex via e-mail (e.g. with enclosed Excel files), diskette, fax or mail.

#### Resistance

The product is tested according to Partex Product Test Programme by the Swedish Test and Research Institute and has the following test properties:

Flammability resistance according to UL94-V0.

Resistant to UV radiation, corresponding to 1 year outdoors in the south of Sweden.


Resistance to chemicals meets Partex Product Test Programme.

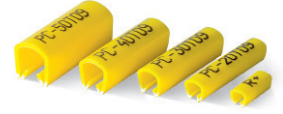
Resistance to temperature and ageing meets norms of Partex Product Test Programme.

For application in hostile environments, please contact Partex for information.


## OVERVIEW

### OPEN WIRE MARKING


Type PC	Article number	AWG*	Ø mm	Area mm	Sleeve length mm	Max no. of chars./sleeve
	PC-10*T04/09/17	~22-16	2.4-3.0	~1.0	6-36	2-19
	PC-20*T04/09/17	~16-12	3.0-4.0	~2.5	6-36	2-19
	PC-30*T04/09/17	~12-11	4.0-5.0	~4.0	6-36	2-19
	PC-40*T04/09/17	~11-10	5.0-6.2	~6.0	6-36	2-19
	PC-50*T04/09/17	~7-5	6,0-7,2	~10.0	6-36	2-19



### CABLE MARKING


Type PK	Article number	Sleeve length mm	No. of chars.	Miscellaneous
	PK-20*T04/09/17/30	6-39	2-21	-
	PK-20Q*T25	25	MAX. 10	Single punched
	PK-20Q*T40	40	MAX. 21	Double punched




Type PO	Article number	Sleeve length mm	No. of chars.	Miscellaneous
	PO-06QT18/30	18	Max 7	Single punched

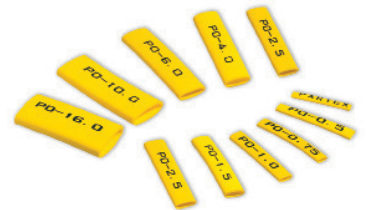


### CLOSED WIRE MARKING

Type PY/PA	Article number	AWG*	Ø mm	Area mm <sup>2</sup>	Sleeve length mm	Max no of chars/sleeve
	PA+00*T04/09/17/30	~28-19	0.8-2.0	~0.15-0.7	6-48	2-30
	PA+02*T04/09/17/30	~22-16	1.3-3.0	~0.2-1,5	6-39	2-25
	PA+05*T04/09/17/30	~18-14	2.0-4.0	~0.5-2.5	6-39	2-25
	PA+10*T04/09/17/30	~16-11	2.5-5.0	~0.75-4.0	6-39	2-25
	PA+11*T04/09/17/30	~16-10	2.8-5.5	~1,0-6,0	6-39	2-25
	PA+20*T04/09/17/30	~13-5	4.0-10.0	~2.5-25.0	6-39	2-25
	PA-30*T04/09/17	~5-	8.0-16.0	~16.0-70.0	15/24/33	2-17



Type PO	Article number	Diameter mm	Area mm <sup>2</sup>	Diameter inch	AWG	No. of chars./sleeve
	PO-01*T04/09/17/30	1.3 - 1.8	0.25	.051 - .071	23-20	2-25
	PO-02*T04/09/17/30	1.7 - 2.2	0.5	.067- .087	20-18	2-25
	PO-03*T04/09/17/30	2.0 - 2.5	0.75	.079- .098	18-17	2-25
	PO-04*T04/09/17/30	2.2 - 2.8	1.0	.087- .110	17-15	2-25
	PO-05*T04/09/17/30	2.7 - 3.5	1.5	.106- .138	15-13	2-25
	PO-06*T04/09/17/30	3.2 - 4.0	2.5	.126- .157	13-11	2-25
	PO-07*T04/09/17/30	3.8 - 4.7	4.0	.150- .185	22-9	2-25
	PO-08*T04/09/17/30	4.6 - 5.5	6.0	.181 - .217	9-7	2-25
	PO-09*T04/09/17/30	5.6 - 7.0	10.0	.220- .276	7-5	2-25
	PO-10*T04/09/17/30	6.5 - 8.0	16.0	.256- .315	5-3	2-25
	PO-11*T04/09/17/30	7.0 - 9.5	18.0	.275- .374	4-3	2-25
	PO-12*T04/09/17/30	7.5 - 10.0	20.0	.295- .394	4-2	2-25
	PO-14*T04/09/17/30	9.5 - 12.0	25.0	.374- .472	1/0	2-25
	PO-16*T04/09/17/30	11.5 - 14.0	35.0	.453- .551	1/0-2/0	2-25
	PO-18*T04/09/17/30	13.5 - 16.0	50.0	.531 - .630	2/0-3/0	2-25
	PO-20*T04/09/17/30	15.5 - 18.0	70.0	.610- .709	3/0-4/0	2-25
	PO-22*T04/09/17/30	17.5 - 20.0	95.0	.689- .787	4/0	2-25
	PO-24*T04/09/17/30	19.5 - 22.0	120.0	.768- .866	4/0-5/0	2-25
	PO-26*T04/09/17/30	21.5 - 24.0	150.0	.846- .945	5/0-6/0	2-25
	PO-28*T04/09/17/30	24.0 - 28.0	185.0	.947-1.104	6/0-7/0	2-25



Black etching ink print is standard. Thermal transfer print on request.

Article number key notes (\*):

D = 2 line text. (PK and PA3)


S = Large text, maximum 7 characters, ca 5,5 mm per character (PK)

E.g. Q = punched; SQ = large text and punched

**Note! Don't forget to state what sorting option you would like (E.G. MFS 30 - on a sheet or MFS 30 - on tape) when you place your order. If nothing is stated, the goods will be shipped unsorted.**

## OVERVIEW

### STANDARD MULTI-CHARACTER WIRE MARKING

Type PA/PK	Article	Sleeve length mm	Sleeve colour	Print colour	Print
	PA-02006/PA-10006/PA-20006/PK-20006BB40.##	6	Yellow	Black	L1, L2, L3, PE
	PA-02006/PA-10006/PA-20006/PK-20006BB69.MP	6	Blue	White	MP
	PA-02012/PA-10012/PA-20012/PK-20012BV29.TRIP	12	Red	White	TRIP
	PA-30006/9AV40.##	6/9	Yellow	Black	L1, L2, L3, PE
	PA-30006/9AV69.MP	6/9	Blue	White	MP
	PA-30012AV29.TRIP	12	Red	White	TRIP

PA-02, PA-1, PA-2 and PK supplied on reels of 1000 markers. PA-3 supplied in strip packs of 5 X 20=100 markers.

AV = loose markers hot stamped print.

BB = reel, black etching ink print.

BG = reel, standard sequences, black etching ink print.

BV= reel, hot stamped print.

## = Print

AWG for guidance only.

**Note. Maximum number of characters for a specific length are recommended.**

**Note. If more characters are desired please contact Partex.**

### PACKAGINGS AND OPTIONS



Unsorted packaging.

#### Unsorted

A loop of semi cut sleeves, packed in plastic bags or cartons with start and stop designations.



Sorted on a sheet

Double-sorted by cable and cabinet

#### Sorted

Marking sleeves packed entirely according to customer requirements.

#### Options

- MFS 10  
One and the same profile sorted in bags or reels. For a easier handling of ordered project.

MFS 10 types: Bag or Reel.

- MFS 20  
Different profiles is sorted in bags, e.g. sorted by cabinet, drawing or cable. This enables fast mounting high control over ordered profile.

MFS 20 types: In bags by cable, drawing, or cabinet.

- MFS 30  
Double-sorting. The markers are first sorted by cable and then the "cable bags" are sorted by cabinet. MFS 30 also allows you to sort the markers on a sheet. Gives a great overview of your markers.

MFS 30 types: Double-sorted in bag or on sheets.

- MFS 40  
Sorted on a sheet or on tape (as MFS 30) but with pre-mounted cable ties or PKH marker holders. The markers are delivered ready to be mounted which shortens the mounting time by far.

MFS 40 types: On a sheet or on tape.

**Don't forget to state what sorting option you would like (E.G. MFS 30 - on a sheet or MFS 30 - on tape)when you place your order. If nothing is stated, the goods will be shipped unsorted.**