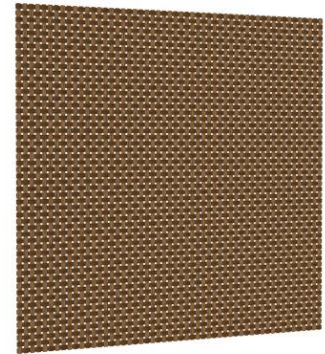


CBG-Basalt fabric

TDS-No. 1300

- ✓ 100% natural
- ✓ ultra-high strength material
- ✓ corrosion resistant
- ✓ chemical durability
- ✓ high electrical resistance
- ✓ low heat conductivity



Properties	Unit	Value
Basic material		Basalt
Weight per unit area	g/m ²	ca. 580
Warp	tex	1200
Weft	tex	1200
Thread thickness warp	thread/10cm	25
Thread thickness weft	thread/10cm	23
Roll width *	cm	approx. 127
Diameter *	mm	150
Moisture content	%	< 1
Binding	Canvas / plain	
Safety instruction	Toxicologically safe, no pulmonary permeability	
Packaging	Roll wrapped in film on a palette	
Storage	In the original packaging, dry, protect from moisture, storage temperature < 35°C	
Processing instructions	Only after conditioning 24h to the processing temperature	
*	Other core diameters, roll widths and lengths on request	

Delivery

- ✓ Transportation should be carried out with covered vehicles to prevent the absorption of moisture

Processing and storage

- ✓ The usual protective measures must be taken during processing. Gloves, breathing protection and safety glasses are recommended. Please observe the instructions for use "Handling mineral wool and insulating materials (glass wool, rock wool)" issued by BG Bau.
- ✓ Store in a dry place in the original packaging, the humidity should not exceed 80%.



Subject to modifications