

MODEL 48

PRECISION OPEN FACE / PNEUMATIC LIFT FLAT LAPPING MACHINE








Open face version (left), pneumatic lift version



PLATE-DIAMETER 48" (1219 MM)
VERSIONS: 3 OR 4 RINGS
TYPE: SINGLE SIDED

MEETING TODAY'S PRECISION SURFACING REQUIREMENTS

-  Available in an open face or a pneumatic lift version, each optionally with 3 or 4 rings
-  Can be used to process a wide variety of materials including semiconductors, electro-optics, ceramics, metals and other specialty products
-  Heavy duty floor standing base, with integrally mounted drive motor, and reduction gearbox, abrasive distribution system, complete with control panel
-  Heavy duty work table, vertically adjustable
-  Conditioning rings with adjustable roller bearing yoke assemblies to maintain lap plate flatness

ACHIEVING HIGH STANDARDS OF FLATNESS AND SURFACE FINISH

HIGHLIGHTS MODEL 48 (OPEN FACE / PNEUMATIC LIFT)

- ✔ Range of loads for pressure weights (machine connected to 4 bar supply) 47 kg / 103lbs to 488 kg / 1077 lbs. Controls for raise / lower are of two hand anti-tie down type
- ✔ Freestanding abrasive system complete with pump driven stirrer tank and multiple point distribution
- ✔ Electrical system wired for 230 / 460 V, 60 Hz, 3 phase with operator controls at 110 V. Complies with EN 60 204
- ✔ High torque drive unit consisting of 7.5 kW / 10 hp motor and reduction gearbox. Lap plate speed 48 rpm
- ✔ Waste container

OPTIONAL FEATURES

- ✔ Variable speed lap drive (using frequency inverter)
- ✔ Water cooled lap plates
- ✔ Non-standard voltages
- ✔ 3-ring model
- ✔ Enlarged, moveable work table to improve multiple parts handling

STANDARD SPECIFICATIONS

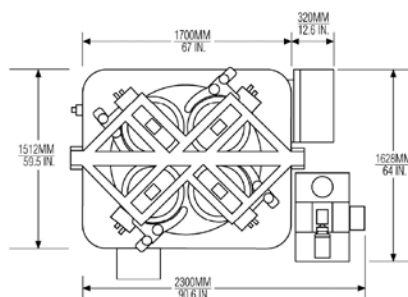
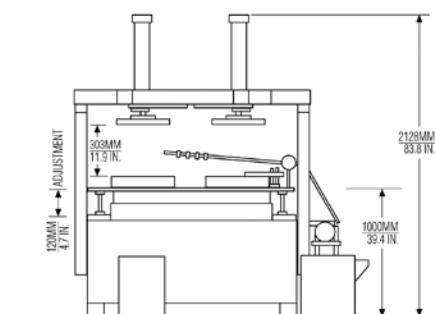
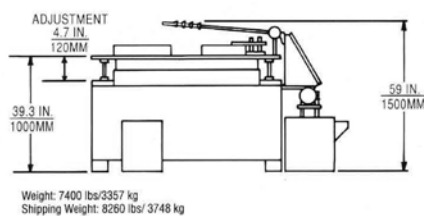
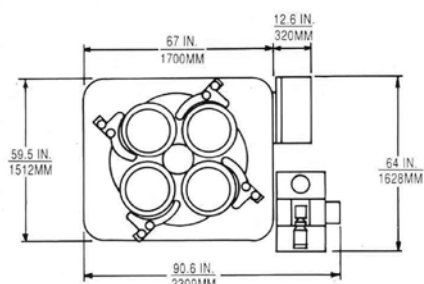
- High density, cast iron serrated lapping plate (consisting of sixteen individual segments) 1219 mm O.D. x 330 mm I.D. / 48" O.D. x 13" I.D.
- Four high density cast iron serrated conditioning rings. 508 mm O.D. x 432 mm I.D. / 20" O.D. x 17" I.D.
- Four work holder blanks
- Four sponge rubber pads (open lift)
- Four felt pads (pneumatic lift)
- Starter sample of Lapmaster abrasive
- Starter sample of Lapmaster vehicle
- Set of Allen Keys
- Operation and maintenance manual

APPROXIMATE WEIGHT

Open face:
7400 lbs / 3357 kg
Pneumatic lift:
8696 lbs / 3944 kg

APPROXIMATE DIMENSIONS

Open face:
90.6" x 64" x 59"
2300 mm x 1628 mm x 1500 mm
Pneumatic lift:
90.6" x 64" x 83.8"
2300 mm x 1628 mm x 2128 mm



Weight: 3944kg/8696 lbs
Shipping weight: 4853kg/10,700 lbs

Open face version

Pneumatic lift version

GET IN TOUCH WITH US TODAY
TOGETHER WE WILL FIND A SOLUTION
FOR YOUR REQUIREMENTS

LAPMASTER WOLTERS

Phone: 1 877 352 8637
sales@lapmaster-wolters.com
www.lapmaster-wolters.com