

GEAR LOCKER FLEX

space-saving and flexible

The FLEX gear locker is a convenient solution for placement options in tight spaces. It combines lockable private compartments with a hook rail and a shoe grid for turnout gear. The open storage guarantees quick access and optimal ventilation. At the same time, private belongings are stored safely. The helmet holders are modelled on head shape and thus ensure professional and careful storage of the helmet.

Body:

- torsion-resistant, made of sheet steel
- sturdy, perforated base plate
- smooth, easy-clean surfaces
- hook rail with two or four ergonomic helmet holders, sturdy hooks and fixtures for clothes hangers

Doors:

- fixed by sturdy stainless steel bolts
- opening angle ca. 110 degrees
- rubber pads to reduce noise

Variants:

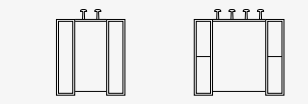
- compartment width: 30 or 40 cm
- feet or plinth
- zinc-plating

Inner dimensions private compartment (ca. HxD in cm):

- 2 persons: 176x50 cm
- 4 persons: 87x50 cm



Dimensions HxWxD in cm (without helmet holder)

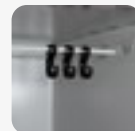


192 x 120 x 50

192 x 140 x 50

192 x 180 x 50

192 x 200 x 50



Equipment

One hook rail with helmet holders for PPE. The private compartments have clothes rails with hooks. In the variant for two people, the lockers also offer a hat shelf.



Locks

As standard, the gear lockers are equipped with a cylinder lock or latch lock. Further locks can be installed on request.



Paintwork

The high-quality powder coating of body and doors is available in almost all RAL colours. Light grey, Flame red and Gentian blue are included in the price.

For 2 or 4 persons

The FLEX gear locker is designed for two or four persons. The version for two persons consists of lockers. In the extended version, two lockable compartments are arranged one above the other. Other combinations of lockers and intermediate section are also possible.

You can find further information about our range of high-quality steel furniture on our website. We would be pleased to send you our catalogue and advise you on site or on the phone.

+49 34345 / 550 232 · feuerwehr@rotstahl.de · www.rotstahl.com

GEAR LOCKERS

Material thicknesses

High-quality processing

All rotstahl® gear lockers are made of high-quality steel sheet. Increased material thickness and functional design create special stability. Therefore, the lockers effortlessly withstand the exacting demands of everyday life in the emergency services.

Sustainable product

Resource-saving, optimized processing, long durability and easy recycling characterize rotstahl® lockers in terms of a sustainable value chain.

PRO

Body:	0,6 mm
Bottom of locker:	0,8 mm
Door of valuables compartment:	1,0 mm



KOMFORT

Body:	0,6 mm
Bottom of locker:	0,8 mm
Door of valuables compartment:	1,0 mm



PROFI

Body:	0,6 mm
Bottom of locker:	0,8 mm
Door of valuables compartment:	1,0 mm



DEVIS

Body:	0,6 mm
Bottom of locker:	0,8 mm
Locker door (Var. 1):	0,6 mm
Door of valuables compartment (Var. 2):	1,0 mm



FLEX

Body/doors:	0,6 mm
Floor grille:	0,8 mm
Traverse with helmet holder:	2,0 mm



JUNIOR

Body:	0,6 mm
Bottom of locker:	0,8 mm
Door of valuables compartment:	1,0 mm



GEAR LOCKERS

for fire brigades and emergency services

