

2 Legged Open Centre Hydraulic Chucks

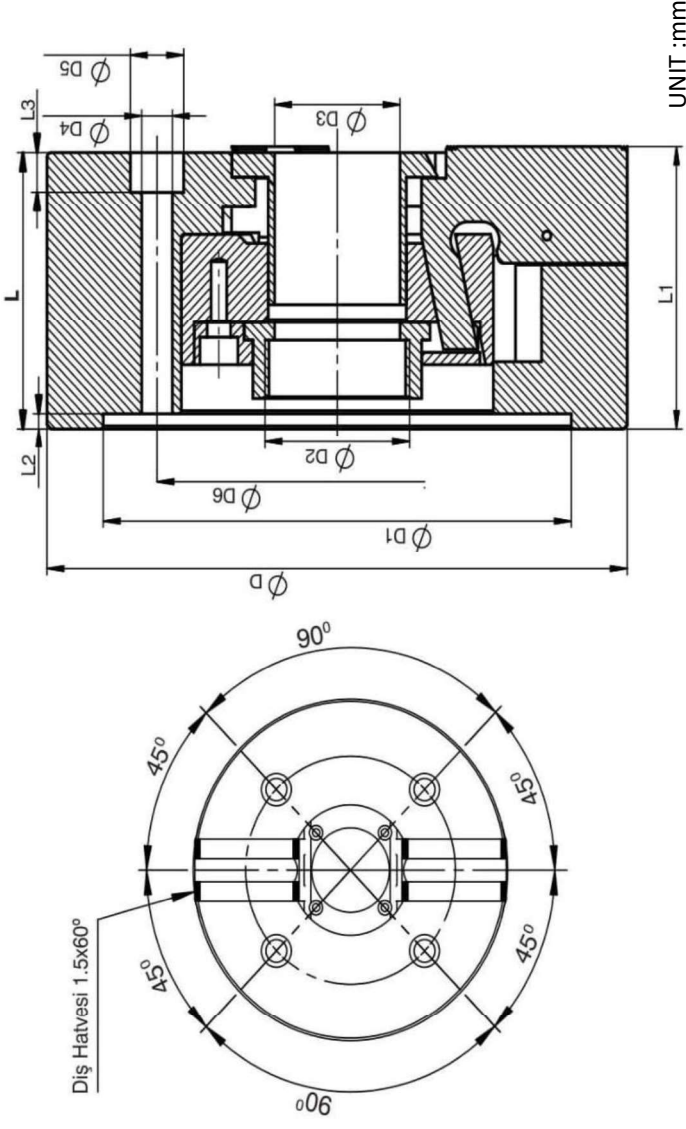


Standard accessory

- 1 Set Standard soft feet
- 1 Set T nut (Connection Lug)
- ISO A Adapter (Connection Flange)
- Connection bolts 12/9
- Puller nut

Open Center 2 jaws Hydraulic Chuck

All parts are hardened by heat treatment and the working surfaces are ground. It has high rigidity, precision and strength properties. Standard connection flange ISO -A (Flange) adapters and soft feet included in the box. The guarantee is 12 months.



Ürün	D	D1	D2	D3	D4	D5	D6	L	L2	L3	Weight
DM1062	169	140	M55X2	46	12	17	104,8	81	5	12	12
DM1082	210	170	M60X2	54	13,5	17	133,4	91	5	18	24
DM1102	254	220	M85X2	75	17	25	171,4	100	5	18	36
DM1122	305	220	M100X2	91	17	25	171,4	110	5	18	49
Product Code	Foot Stroke	Maximum RPM	Maximum Tensile Force	Maximum Compression Force	Piston Stroke	Weight					
DM1062	5,5	6000	15KN	38KN	13	12					
DM1082	7,3	5000	23KN	57KN	17	24					
DM1102	8,5	4200	25KN	74KN	20	36					
DM1122	10,2	3300	37KN	94KN	20	49					