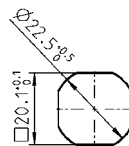
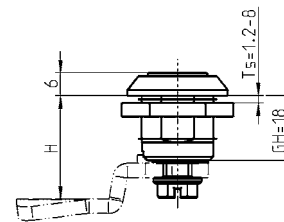
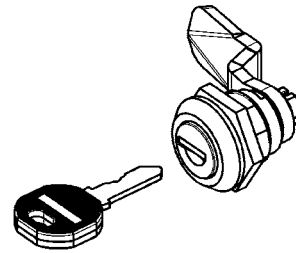
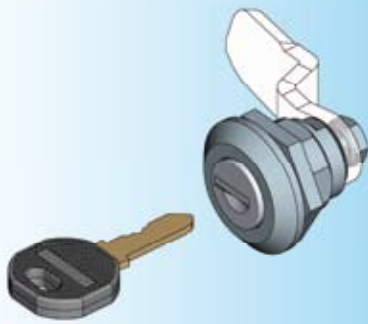
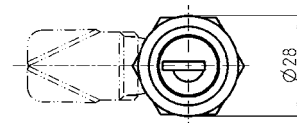




- Info
- 1 Quarter turns
- 2 Rod controls
- 3 Locking systems
- 4 Hinges
- 5 Gasketing
- 6 Handles
- 7 Aluminium windows
- 8 Stainless steel



Cut out



Key removable in both positions.

Further parts see page
 - Cam with catch 8A-320
 (not for cam with rod control)
 - Key 12B-140

Quarter turn with cylinder AISI 316, round cylinder, screw and washer stainless steel.
 Each cylinder has one silver steel key with polyamide GF grip black.

keyed EK 333	1048-U6-PH
keyed different	1048-U7-PH