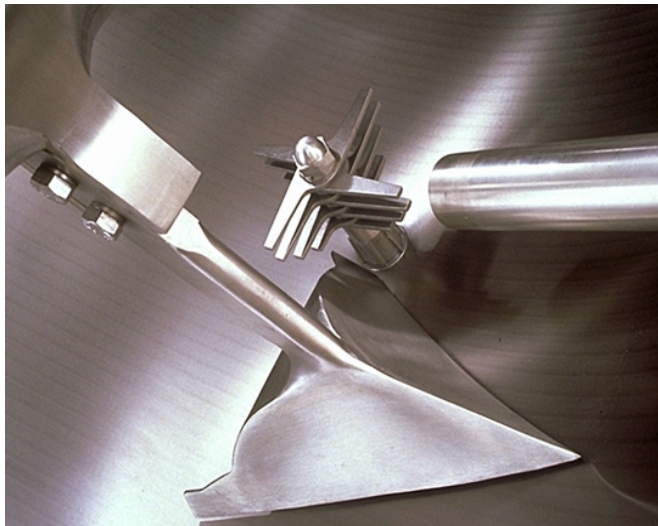




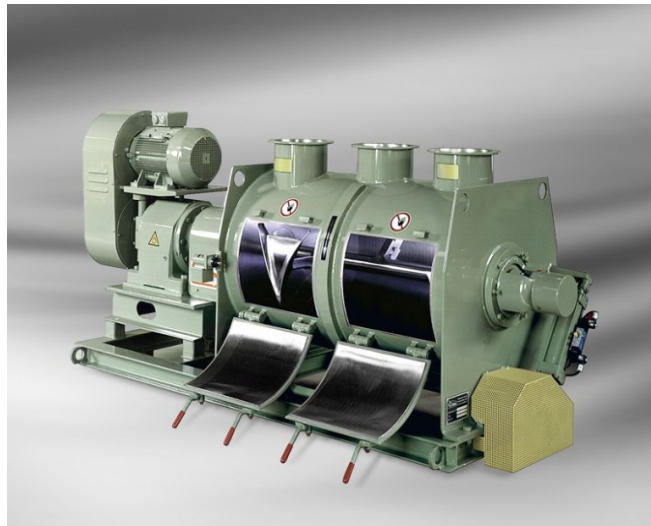
## Ploughshare® - Batch Mixer

- Highest quality mixes
- Short mixing times
- Reproduceable batches
- Gentle treatment of the product
- Maximum availability
- Low maintenance mixer concept
- Easy accessibility to all inside parts of the mixer

# Ploughshare®-Batch Mixer



Ploughshare®-Shovel -Chopper -Injection Lance  
Liquid supply straight into the area in which the chopper operates



Ploughshare® Batch Mixer FKM 600 D

## Batch Mixer

Batch mixers operate on the principle of a mechanical generated fluid bed introduced by Lödige to mixing technology. Equipped with mixing elements which can be adapted to individual requirement, the mixes produced in these machines are of the highest quality.

## Range of Application

- Processing bulk materials (powdery, granular, fibrous)
- Supply of liquids to the dry solid materials (moistening + granulating)
- Processing pumpable materials

## Sizes

| Type        | Drum Volume in liter | Working Capacity in liter |
|-------------|----------------------|---------------------------|
| FKM 130 D   | 130                  | 50 - 90                   |
| FKM 300 D   | 300                  | 100 - 210                 |
| FKM 600 D   | 600                  | 200 - 420                 |
| FKM 1200 D  | 1200                 | 400 - 850                 |
| FKM 1600 D  | 1600                 | 550 - 1100                |
| FKM 2000 D  | 2000                 | 800 - 1400                |
| FKM 3000 D  | 3000                 | 1200 - 2100               |
| FKM 4200 D  | 4200                 | 1500 - 3000               |
| FKM 6000 D  | 6000                 | 2100 - 4200               |
| FKM 8000 D  | 8000                 | 3000 - 5500               |
| FKM 10000 D | 10000                | 4000 - 7000               |
| FKM 13500 D | 13500                | 5000 - 10000              |
| FKM 15000 D | 15000                | 6000 - 11000              |
| FKM 20000 D | 20000                | 8000 - 14000              |
| FKM 25000 D | 25000                | 10000 - 17000             |
| FKM 30000 D | 30000                | 12000 - 21000             |

## Mode of Operation

Ploughshare® shovels rotate as mixing elements in special arrangement on the mixer shaft in a horizontal, cylindrical drum. The size, number and positioning, geometric shape and peripheral speed of the mixing elements are coordinated in such a way that they produce a three-dimensional movement of the components. The resultant turbulence in the mix, whereby all the product is constantly involved in the mixing process, prevents the formation of deadspots or low-movement zones in the mixing drum and ensures high speed, precision mixing. To prevent particles from being squashed against the drum wall, the mixing elements are specially shaped to lift product from the wall within the radial movement of the mix.

In some cases additional assistance for the mixing elements to obtain the desired mixing effect is required. Separately driven, high-speed choppers can be installed to disperse agglomerations and control granulation during the mixing process in coordination with the mixing elements.

## Optional Equipment

- Surfaces with maximum wear resistance
- Heavy duty constructional steels, stainless steels and special materials
- Chopper units
- Heated/cooled drum, endplates and shaft
- Equipment for liquid supply

**Gebrüder Lödige  
Maschinenbau GmbH**

Elsener Straße 7 - 9  
33102 Paderborn

Telefon: +49 5251 309-0  
Telefax: +49 5251 309-123

E-Mail: info@loedige.de  
www.loedige.de