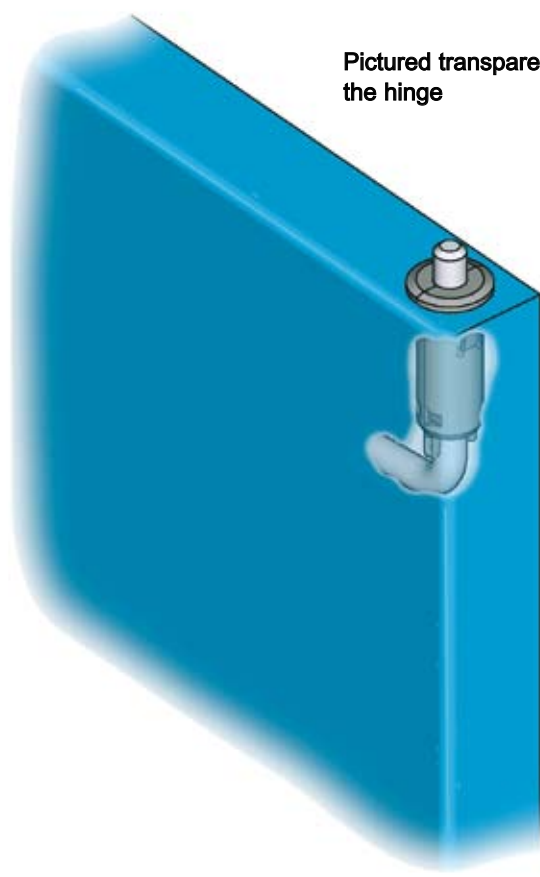
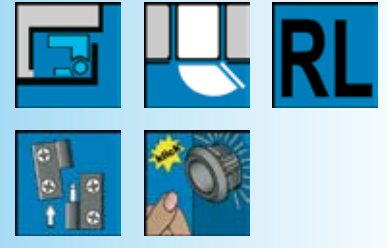
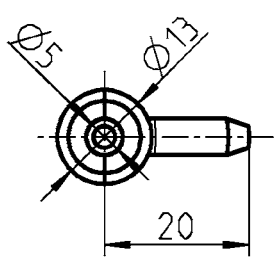
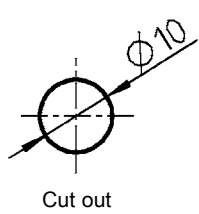
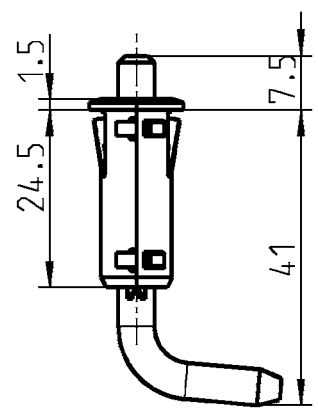
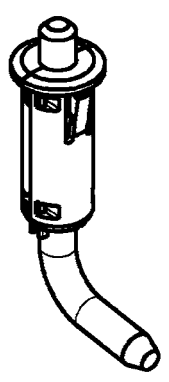
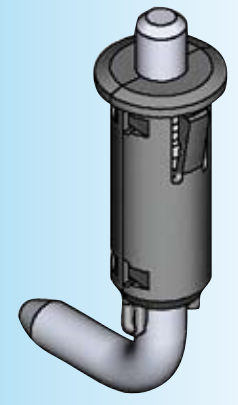


Pin hinge
PROGRAM 1117

Beschlagteile



Pictured transparent in the area of the hinge



Pin hinge, guide tube polyamide black, pin zinc die, spring material spring steel zinc pl.

Ts = 1,0	1117-U6
Ts = 1,5	1117-U6-01
Ts = 2,0	1117-U6-02

Attention:
For use with small doors only.

E.g. counter- (energy, water) or toolboxes.