

1 2 3 4 5 6 7 8

NOTE:

MATERIAL:  
 HOUSING: LCP(UL94V-0)  
 ACTUATOR: LCP(UL94V-0)  
 TERMINAL: PHOSPHOR BRONZE  
 SOLDER PAD: BRASS

RATING:  
 OPERATING VOLTAGE:50V AC  
 CURRENT RATING:0.2A  
 OPERATING TEMPERATURE:-40°C ~ +85°C  
 OPERATING HUMIDITY RANGE:RELATIVE HUMIDITY 85% MAX  
 (NO CONDENSATION)

PLATING:  
 TERMINAL: GOLD OVER NICKEL  
 SOLDER PAD: TIN OVER NICKEL

STORAGE TEMPERATURE RANGE:-10°C ~ +50°C  
 STORAGE HUMIDITY RANGE:RELATIVE HUMIDITY 85% MAX  
 (NO CONDENSATION)

REV	MODIFICATION	DATE	DRAW

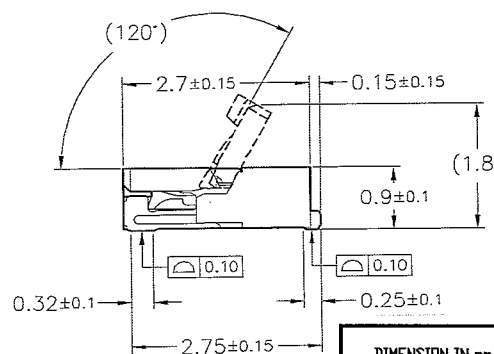
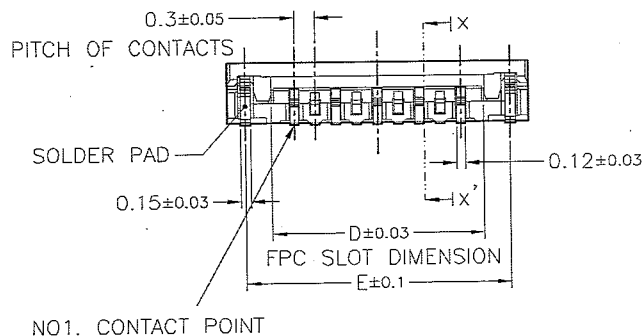
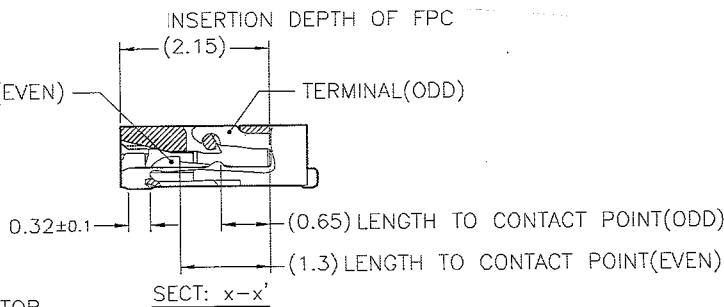
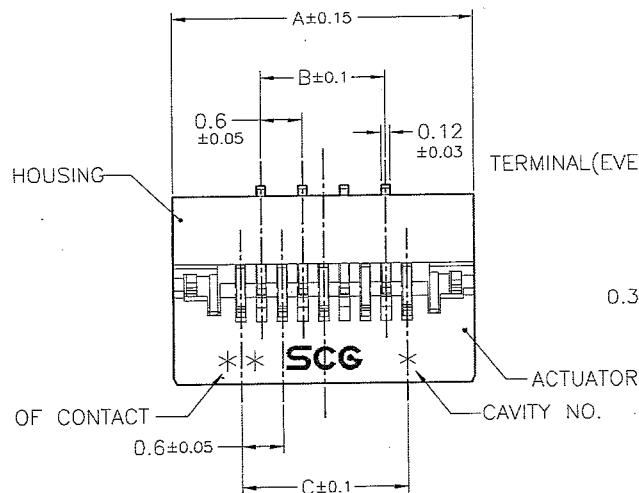
ORDERING INFORMATION

FPCT8-Z xx 01 B3 09

No of Contacts

FRONT FLIP TYPE  
 R/A (LOWER Contact)  
 PACKAGE TA-EMBOSSED

01:GOLD FLASH  
 1u"~3u"(Nickel Barrier)



NO.OF CONTACTS	DIM. A	DIM. B	DIM. C	DIM. D	DIM. E
09	4.35	1.8	2.4	3.06	3.82
11	4.95	2.4	3.0	3.66	4.42
13	5.55	3.0	3.6	4.26	5.02
15	6.15	3.6	4.2	4.86	5.62
17	6.75	4.2	4.8	5.46	6.22
19	7.35	4.8	5.4	6.06	6.82
21	7.95	5.4	6.0	6.66	7.42
23	8.55	6.0	6.6	7.26	8.02
25	9.15	6.6	7.2	7.86	8.62
27	9.75	7.2	7.8	8.46	9.22
29	10.35	7.8	8.4	9.06	9.82
31	10.95	8.4	9.0	9.66	10.42
33	11.55	9.0	9.6	10.26	11.02
35	12.15	9.6	10.2	10.86	11.62
37	12.75	10.2	10.8	11.46	12.22
39	13.35	10.8	11.4	12.06	12.82
41	13.95	11.4	12.0	12.66	13.42
43	14.55	12.0	12.6	13.26	14.02
45	15.15	12.6	13.2	13.86	14.62
49	16.35	13.8	14.4	15.06	15.82
51	16.95	14.4	15.0	15.66	16.42
57	18.75	16.2	16.8	17.46	18.22
61	19.95	17.4	18.0	18.66	19.42
67	21.75	19.2	19.8	20.46	21.22
71	22.95	20.4	21.0	21.66	22.42



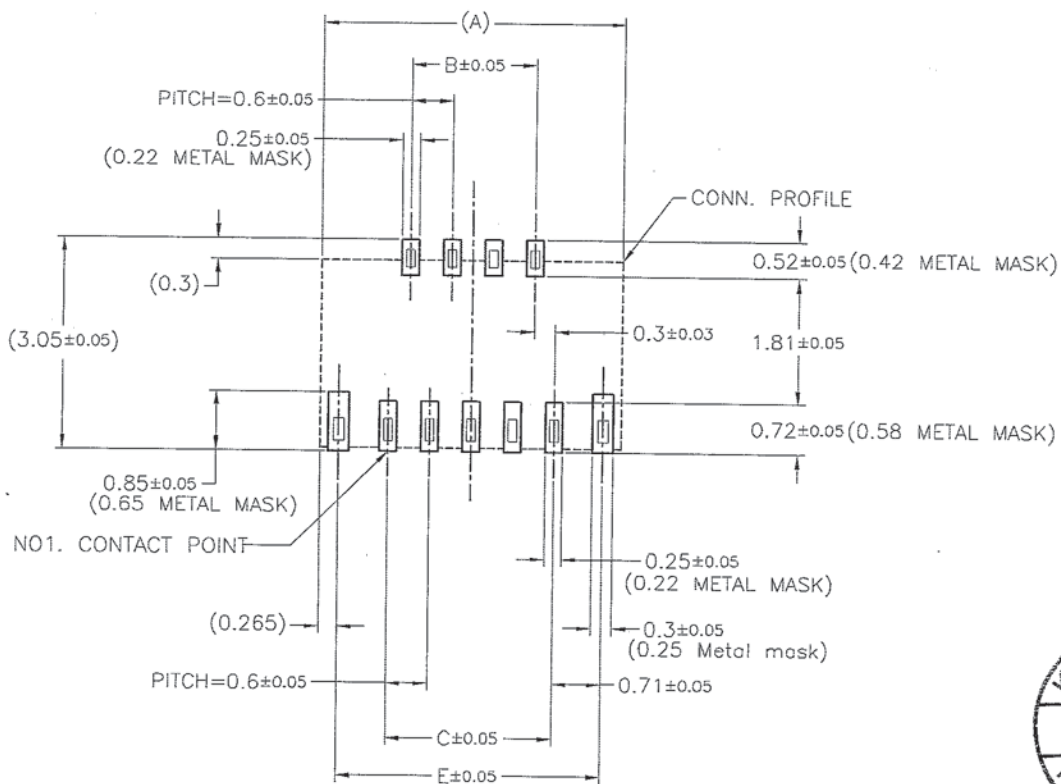
DIMENSION IN mm [Inch]		PROD. SPEC.	KINGFONT PRECISION INDUSTRIAL CO., LTD.	
TOLERANCE UNLESS OTHERWISE SPECIFIED		PKG. SPEC.	TITLE 0.3mm Pitch FPC Conn. (H=0.9) CUSTOMER DRAWING	
.X±	X.*±	APPROVE <i>Gan</i>	FILE NO.	DWG NO. FPCT8-Zxx01B309
.XX±	.X.*±	CHECK <i>Mmp</i>	SIZE A4	PROJ.  SHEET 1/5
.XXX±	XX.*±	DRAW <i>Mmp</i>	SCALE 10:1	REV A

1 2 3 4 5 6 7 8 QR-2100-043

1 2 3 4 5 6 7 8

REV	MODIFICATION	DATE	DRAW

RECOMMENDED METAL MASK THICKNESS:  $t=0.1\text{mm}$



NO. OF CONTACTS	DIM. A	DIM. B	DIM. C	DIM. E
09	4.35	1.8	2.4	3.82
11	4.95	2.4	3.0	4.42
13	5.55	3.0	3.6	5.02
15	6.15	3.6	4.2	5.62
17	6.75	4.2	4.8	6.22
19	7.35	4.8	5.4	6.82
21	7.95	5.4	6.0	7.42
23	8.55	6.0	6.6	8.02
25	9.15	6.6	7.2	8.62
27	9.75	7.2	7.8	9.22
29	10.35	7.8	8.4	9.82
31	10.95	8.4	9.0	10.42
33	11.55	9.0	9.6	11.02
35	12.15	9.6	10.2	11.62
37	12.75	10.2	10.8	12.22
39	13.35	10.8	11.4	12.82
41	13.95	11.4	12.0	13.42
43	14.55	12.0	12.6	14.02
45	15.15	12.6	13.2	14.62
49	16.35	13.8	14.4	15.82
51	16.95	14.4	15.0	16.42
57	18.75	16.2	16.8	18.22
61	19.95	17.4	18.0	19.42
67	21.75	19.2	19.8	21.22
71	22.95	20.4	21.0	22.42



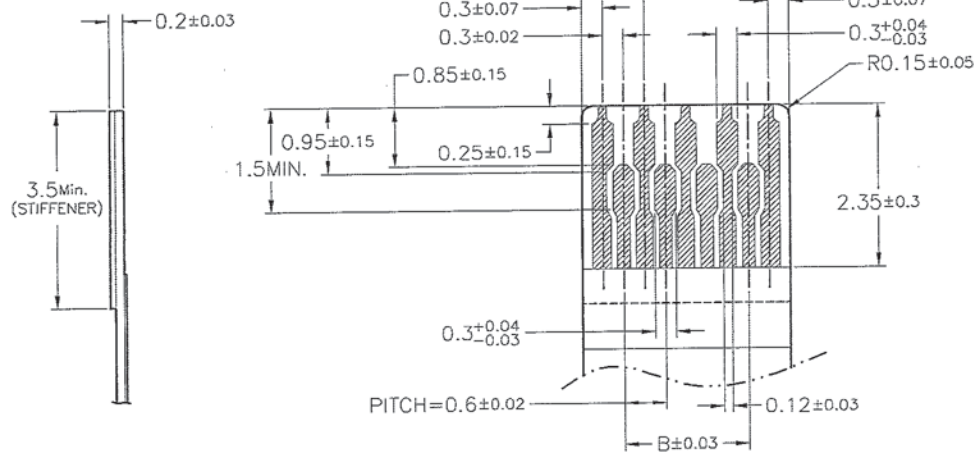
FPC INSERT DIRECTION  
PCB Layout

DIMENSION IN mm [Inch]		PROD. SPEC.	KINGFONT KINGFONT PRECISION INDUSTRIAL CO., LTD.	
TOLERANCE UNLESS OTHERWISE SPECIFIED		PKG. SPEC.	TITLE	CUSTOMER DRAWING
.X±	X.*±	APPROVE <i>GMY</i>	0.3mm Pitch FPC Conn. (H=0.9)	
.XX±	.X.*±	CHECK <i>Mmp</i>	FILE NO.	DWG NO. FPCT8-Zxx01B309
.XXX±	XX.*±	DRAW <i>Mmp</i>	SIZE A4	PROJ.  SHEET 2/5
			SCALE 10:1	REV A

1 2 3 4 5 6 7 8 QR-2100-043

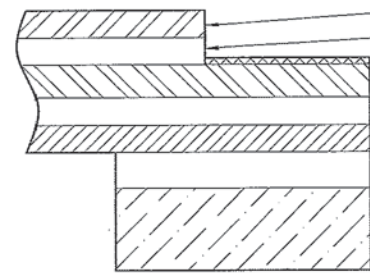
APPLICABLE FPC

(NORMAL FPC)



FPC CONSTRUCTION

(RECOMMENDED SPECIFICATION)

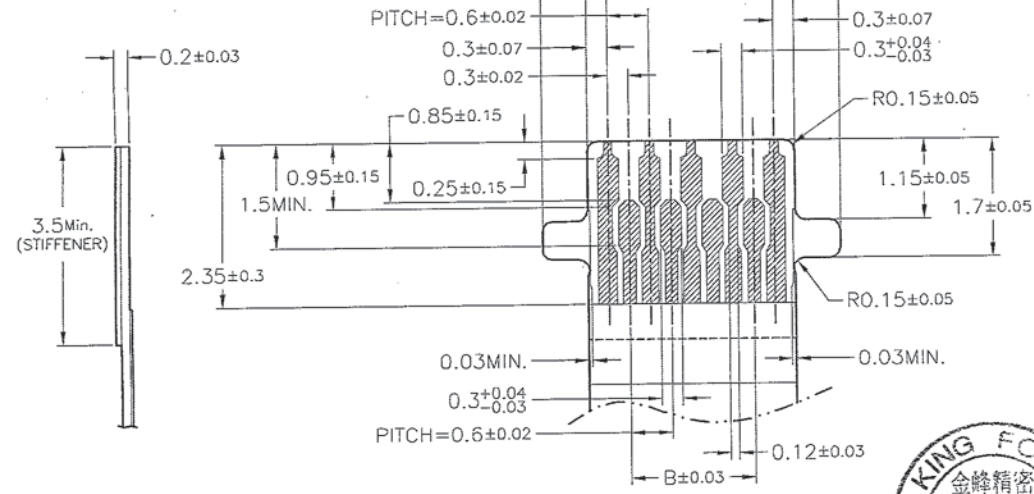


DESCRIPTION	MATERIAL	T(UM)
COVER FILM	POLYAMIDE 1 MIL THICK.	25
COVER ADHESIVE		25
PLATING	1 UM TO 5 UM NICKEL UNDERPLATED 0.2 UM GOLD PLATED	(3)
COPPER FOIL	CU 1 OZ	35
BASE ADHESIVE	HEAT-HARDENED ADHESIVE	25
BASE FILM	POLYAMIDE 1 MIL THICK.	25
REINFORCEMENT MATERIAL	HEAT-HARDENED ADHESIVE	40
ADHESIVE		
STIFFENER	POLYAMIDE 3 MIL THICK.	75

NO.OF CONTACTS	DIM. B	DIM. C	DIM. F	DIM. G
09	1.8	2.4	3.0	4.3
11	2.4	3.0	3.6	4.9
13	3.0	3.6	4.2	5.5
15	3.6	4.2	4.8	6.1
17	4.2	4.8	5.4	6.7
19	4.8	5.4	6.0	7.3
21	5.4	6.0	6.6	7.9
23	6.0	6.6	7.2	8.5
25	6.6	7.2	7.8	9.1
27	7.2	7.8	8.4	9.7
29	7.8	8.4	9.0	10.3
31	8.4	9.0	9.6	10.9
33	9.0	9.6	10.2	11.5
35	9.6	10.2	10.8	12.1
37	10.2	10.8	11.4	12.7
39	10.8	11.4	12.0	13.3
41	11.4	12.0	12.6	13.9
43	12.0	12.6	13.2	14.5
45	12.6	13.2	13.8	15.1
49	13.8	14.4	15.0	16.3
51	14.4	15.0	15.6	16.9
57	16.2	16.8	17.4	18.7
61	17.4	18.0	18.6	19.9
67	19.2	19.8	20.4	21.7
71	20.4	21.0	21.6	22.9

APPLICABLE FPC

(FPC WITH TABS)

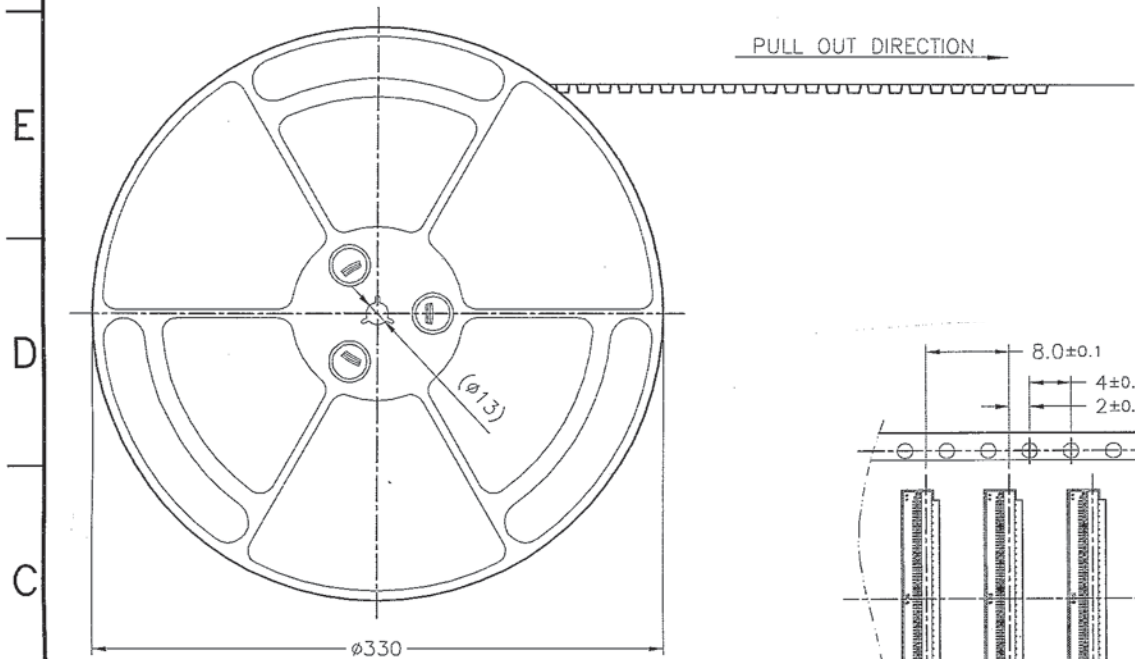
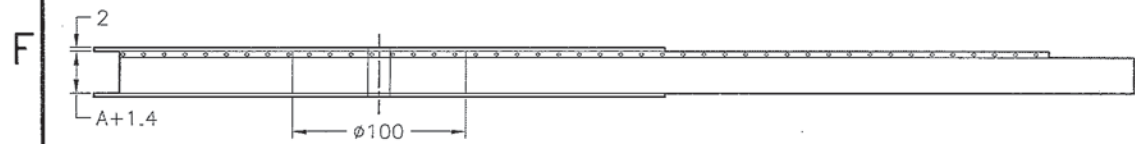


DIMENSION IN mm [Inch]		PROD. SPEC.
.X±	X.*±	PKG SPEC.
.XX±	.X.*±	APPROVE <i>Gany</i>
.XXX±	.XX.*±	CHECK <i>Mony</i>
		DRAW <i>Mony</i>

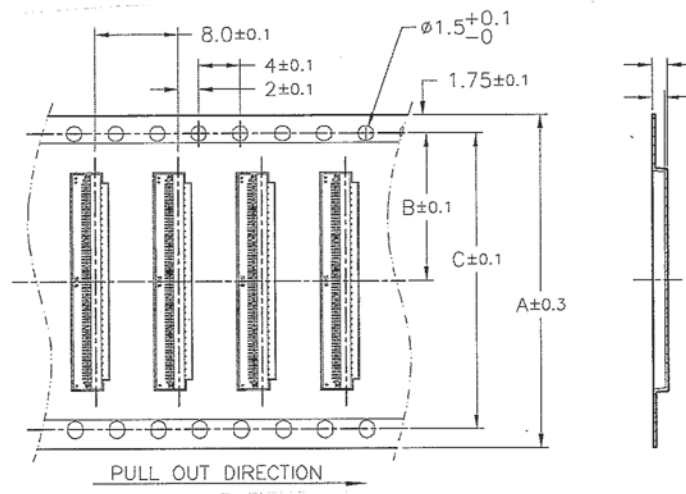
KINGFONT PRECISION INDUSTRIAL CO., LTD.	
TITLE	0.3mm Pitch FPC Conn. (H=0.9)
CUSTOMER DRAWING	
FILE NO.	DWG NO. FPCT8-Zxx01B309
SIZE	A4
PROJ.	SHEET 3/5
SCALE	10:1
REV	A

# EMBOSSED TAPE PACKING

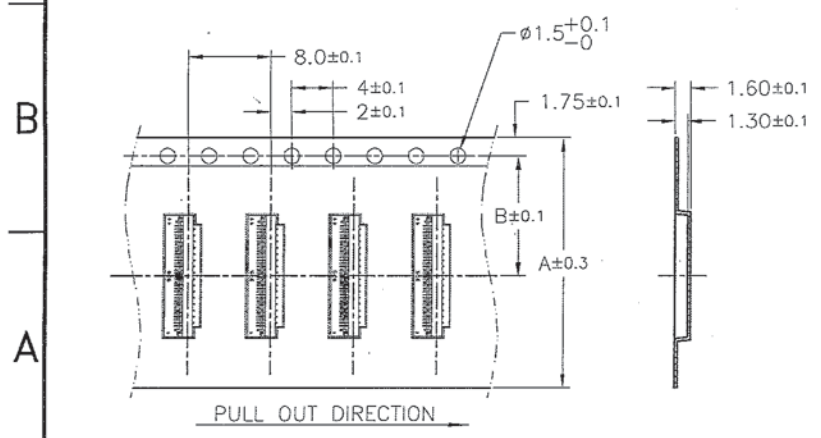
REV	MODIFICATION	DATE	DRAW



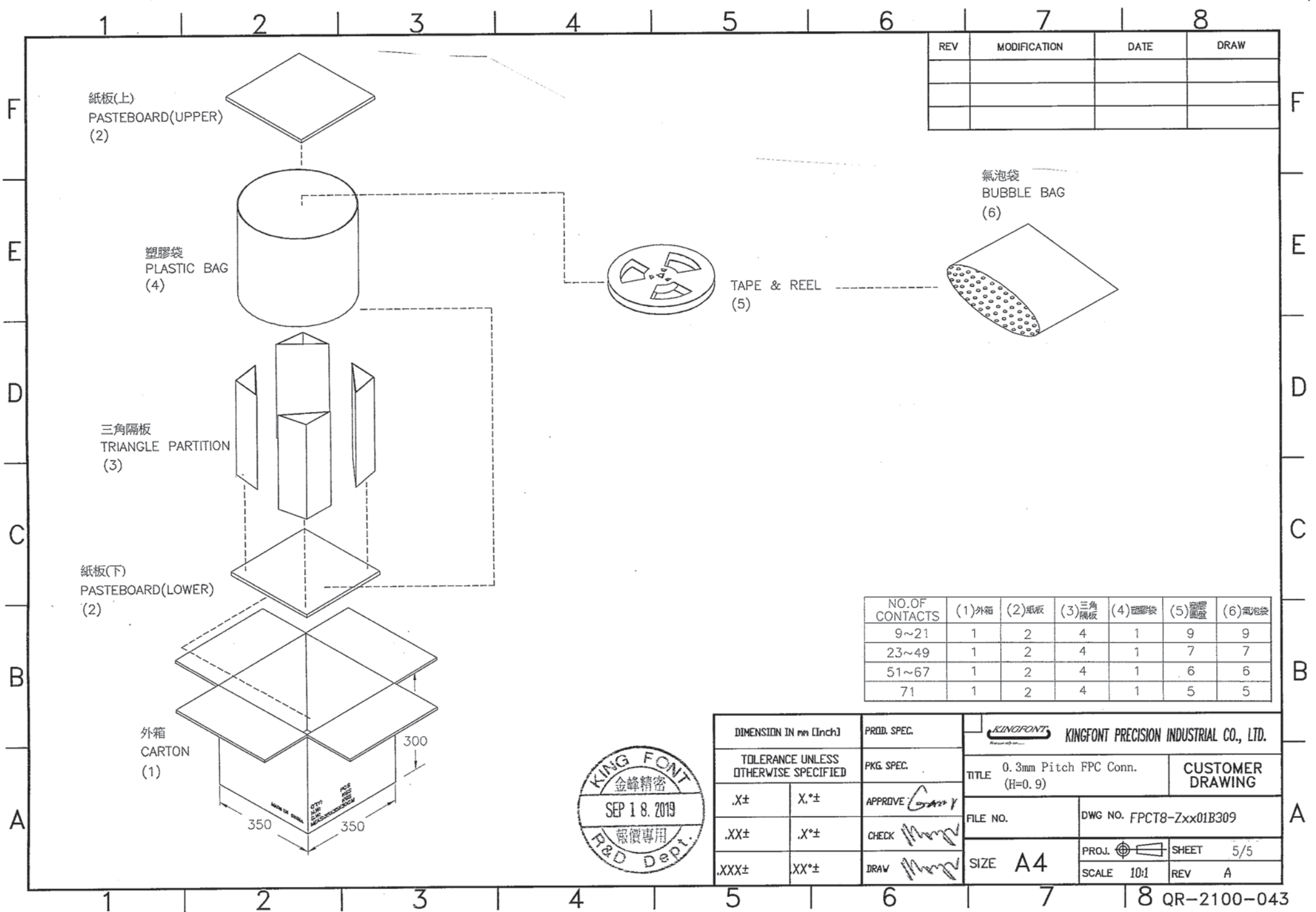
- NOTE:
- 1.10 SPROCKET HOLE PITCH CUMULATIVE TOLERANCE  $\pm 0.2$
  2. CARRIER CAMBER IS WITHIN 1 mm IN 250mm.
  3. MATERIAL : BLACK CONDUCTIVE POLYSTYRENE ALLOY.
  4. THICKNESS :  $0.3 \pm 0.05$ mm.
  5. COMPONENT LOAD PER 13" REEL : 5000PCS.
  6. FOR TAPE WIDTH (DIMENSION A) 16 AND 24mm A PILOT HOLE IS PROVIDED ON ONE SIDE. FOR TAPE WIDTH (DIMENSION A) 32 AND 44mm PILOT HOLES ARE PROVIDED ON BOTH SIDES.



NO. OF CONTACTS	DIM. A	DIM. B	DIM. C
9 ↓ 21	16	7.5	—
23 ↓ 49	24	11.5	—
51 ↓ 67	32	14.2	28.4
71	44	20.2	40.4



DIMENSION IN mm [Inch]		PROD. SPEC.	KINGFONT PRECISION INDUSTRIAL CO., LTD.	
TOLERANCE UNLESS OTHERWISE SPECIFIED		PKG. SPEC.	TITLE	CUSTOMER DRAWING
.X±	X*±	APPROVE: <i>Gmy</i>	0.3mm Pitch FPC Conn. (H=0.9)	FILE NO. _____ DWG NO. FPCT8-Zxx01B309
.XX±	.X*±	CHECK: <i>Mmp</i>	SIZE A4	
.XXX±	.XX*±	DRAW: <i>Mmp</i>	PROJ.  SHEET 4/5	SCALE 10:1 REV A



REV	MODIFICATION	DATE	DRAW

NO. OF CONTACTS	(1)外箱	(2)紙板	(3)三角隔板	(4)塑膠袋	(5)膠帶	(6)氣泡袋
9~21	1	2	4	1	9	9
23~49	1	2	4	1	7	7
51~67	1	2	4	1	6	6
71	1	2	4	1	5	5

DIMENSION IN mm [Inch]		PROD. SPEC.		KINGFONT PRECISION INDUSTRIAL CO., LTD.	
TOLERANCE UNLESS OTHERWISE SPECIFIED		PKG. SPEC.		TITLE 0.3mm Pitch FPC Conn. (H=0.9)	
.X±	X.*±	APPROVE	<i>Carry</i>	CUSTOMER DRAWING	
.XX±	.X.*±	CHECK	<i>Mmp</i>	FILE NO.	DWG NO. FPCT8-Zxx01B309
.XXX±	.XX.*±	DRAW	<i>Mmp</i>	SIZE A4	PROJ.  SHEET 5/5
				SCALE 10:1	REV A

