

Let's connect!
KVM can be so simple

kvm-tec

... FLEXline

kvm-tec customized System

MAXflex is the genius product from FLEXline the clever customized KVM System from kvm-tec. All FLEXline Extender have an ultra slim casing, are available in a single and dual version, have embedded sound are compatible with standard network components and are delivered with kvm-tec Switching Manager Software-switch up@work.

Flexline saves you space in a rack.

4 single or 4 dual Extender in 1RU

USB2.0 in-house development, USB save feature, USB Emulation Mode & USB Sharing



max

flex

www.kvm-tec.com

... smart connections

DVI-D/ DVI-I USB2.0 Extender over IP
single redundant in fiber

max resolution 1920 x 1200 @60 Hz

max distance 160km/99mi in fiber

only one cable for USB and Video,

Sound embedded & sound analog (opt)

full HD videos in real time

USB transmission rate max 480Mbit/s

firmware flash upgrade without cable

VGA in - DVI out ,RS 232 interface

DVI extension without loss of quality

Feature - freeze last image

also suitable for 24V systems

MAXflex single redundant in fiber

The highly optimized KVM Extender over IP has a range of 500m/1640ft, 20km/77mi, 160km/99mi at a resolution of 1920x1200 @60 Hz and is available in fiber as single redundant version

Redundant for high security in critical applications.

The perfect tuning of kvm-tec video compression with a low latency time (<5ms) enables a delay-free transmission of the signals. USB and video is transmitted via duplex LC fiber cable. Due to the DVI extension Full HD videos can be transmitted in real time. USB memory, sound, RS232, analog VGA- as DVI transfer are already included.

With the included switching upgrade up to 1000 endpoints, the MAXflex Extender can be integrated into a matrix switching system up to 1000 endpoints in conjunction with a standard network switch. kvm-tec Switching Manager - the intelligent software enables convenient management and intuitive operation of KVM extenders in the switching system. A Windows PC or Tablet with network interface is required for commissioning and operating the software.

Softwarefeatures

Mouse glide &Switch

up to 16 screens can be operated and controlled with 1 mouse & 1 keyboard

4 FUTURE
kvm-tec High Performance KVM Systems

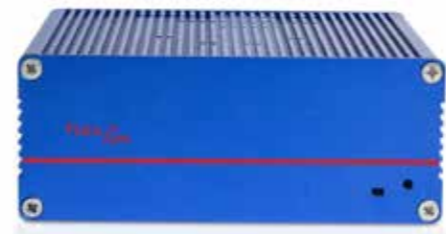
6016L Local CPU unit

6016R Remote CON unit

Switching Manager Software

The intelligent software solution from kvm-tec for managing all KVM extenders connected in a matrix switching system up to 1000 endpoints. The local and remote parts can be connected or disconnected by touch or mouse click. For a quick overview, the extenders are arranged in an optimized way and the status of the extenders is highlighted in color.

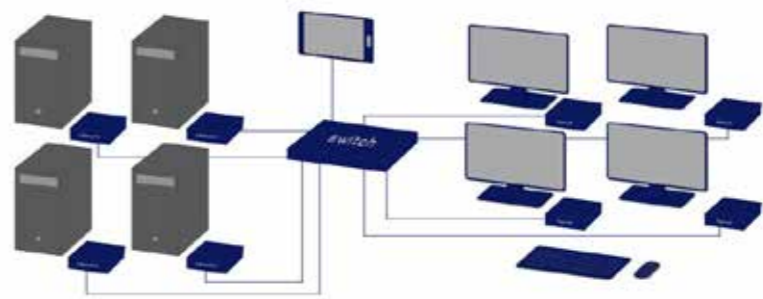
- stores up to 5 various scenarios
- display of the USER sessions
- update management for all extenders in the switching system
- Extender setting definition
- Multihead groups and static partner
- Mouse glide&switch
- 4K Multiview Commander Management
- unlocking kvm-tec upgrades
- displays & Update the current firmware version in the Switching System
- Network environment 1Gigabit Bandwidth: IGMP Snooping



SOFTWARE - FEATURE

Mouse Glide & Switch

with only one mouse and one keyboard, multiple PCs can be operated from one workstation. The arrangement of up to 16 monitors via the Switching Manager can be horizontal or vertical and is comparable to a virtual desktop wall. With the stand alone solution up to 4 screens/PCs can be operated and controlled.



CONNECT kvm-tec Extender in Matrix Switching Systems and you can go up to 2000 endpoints and have a super fast switching. You can connect a wide range of different sources (servers, operator workstation, PC, surveillance cameras, video walls and much more) and operate & control the system with centralized management
Network Environment; 1 or 10 Gbit bandwidth
IGMP Snooping (for videosharing)



COLLABORATE with standard network components. kvm-tec Extender are compatible with standard network components and all kvm-tec Extender can collaborate in real time with 60Hz in full HD or 4K resolution



COMMUNICATE in your Switching System with our kvm-tec Switching Manager Software. The local and remote Extender are arranged in an optimized way and the Extender status is highlighted in color. With the kvm-tec Systems computers and servers can be located away from work desk into central server room for a high security level. The environment heat and noise are reduced at the work station and an ergonomic and quiet workplace for all users is possible



CONTROL your application in a much better way with all our in-house developments, like USB 2.0 transmission, video compression without latency, only one cable for USB and video transmission ,zero latency. With our unique features each user can access multiple PC sources and can control and operate up to 16 screens with one mouse & keyboard. Video sharing can be done seamless and a central video wall can be integrated for sharing all informations in real time

kvm-tec = C⁴





Technical Specifications

		MA1-Local/CPU	MA1 Remote/CON
Interfaces	Video	1 x DVI in 1x DVI out	1x DVI-D out
	USB 2.0	1 x USB-B to PC	4 x USB-A (devices)
	Audio	1 x 3,5mm jack (Line In) 1 x 3,5mm jack (Line out)	1 x 3,5mm jack Line In) 1Vpp 1 x 3,5mm lack (Speaker) 2x10mW@32Ohm
Video	Signal type Resolution (digital)	DVI-D max. 1920x1200 @ 60Hz	DVI-D max. 1920x1200 @ 60Hz
	Signal type Resolution (analog) (opt.) Color mode	DVI-I max. 1920x1200 @ 60Hz 24bit	DVI-I max. 1920x1200 @ 60Hz 24bit
Audio	Type Bandwidth	analogue / embedded 16bit, 44kHz, 2ch	analogue/embedded 16 bit, 44kHz, 2ch
USB	Specification Type Rate	USB 2.0 transparent max. 480 Mbit/s mass storage devices & camera optional	USB 2.0 transparent max. 480 Mbit/s mass storage devices & camera optional
RS 232 interface		transparent up to 115200 baud +/-5V,CTS/DTR handshake	transparent up to 115200 baud +/-5V,CTS/DTR handshake
Casing	Material	anodized aluminum	anodized aluminum
	Dimension (w x H x D) Weight Shipping weight SET 1895 g /4.17 lb	108 x 43 x 107,5 mm 4.25 x 1.69 x 4,23 inch 295 g / 0.65 lb shipment weight 1005g/2,21 lb	108 x 43x 107,5 mm 4.25 x 1.69 x 4.29 inch 295 g/ 0.65 lb shipment weight 890 g/ 1.96lb
Power Supply	Type	wall power supply unit 12 VDC 1A redundant max 35V	wall power suppl y unit 12 VDC 1A redundant max 35V
Power Input	Operation	12W	12W without USB devices
Operation environment	Temperature Humidity	0 to +45 °C /32 to 113 °F) < 80%, non -condensing	0 to +45 °C /32 to 113 °F) < 80%, non- condensing
Storage environment	Temperature Humidity	-25 to 80 °C /-13 to 176 F < 80%, non condensing	-25 to 80 °C /-13 to 176 F < 80%, non condensing
Cooling		free air convection	free air convection
MTBF		82.820 calculated hours approx. 10 years	82.820 calculated hours approx. 10 years
Conformity		CE, FCC	CE, FCC
Warranty		2 years (5 years optional)	2 years (5 years optional)
Delivery content	Devices	1 x MA1-F local (CPU)	1 x MA1-F remote (CON)
	Power Supply	1 x wall power supply unit 12V 1A (EU-plug or INT plug)	1 x wall power supply unit 12V 1A (EU-plug or INT plug)
	Cables	1 x DVI - DVI cable 1,8m (5.9ft) 1 x USB cable 1,8m (5.9ft)	
	SFP module	2 x SFP module multimode up to 500 m /1640ft duplex LC	2 x SFP module multimode up to 500m /1640ft duplex LC
	Mounting	4 x rubber feet	4 x rubber feet
	Manual	Quickinstallation manual download: www.kvm-tec	

Part Number & Short description

Part No.	Order No.	Short description
6016	MA1-F	Maxflex Extender Single Fiber – Set EAN 0798190109312 UPC 051497113094
6016L	MA1-FL	Maxflex Extender Single Fiber –Local Unit /CPU EAN 0798190109329 UPC 051497113100
6016R	MA1-FR	Maxflex Extender Single Fiber –Remote Unit /CON EAN 0798190109336 UPC 051497113117
9003 9002	GV5JU GV5J	Warranty extension to 5 years per UNIT Warranty extension to 5 years per SET
ADD-ONS 6231	UMK-FLEX	Rack Mounting Kit for under the table for FLEXline EAN 0798190109466 UPC 051497113247
6232	RMK-FLEX-F	Rack Mounting Kit with front panel for FLEXline EAN 0798190109473 UPC 051497113254
6233	RMK-FLEX-FN	Rack Mounting Kit with front panel and Power supply EAN 0798190109480 UPC 051497113261
6234	RMK-FLEX	Rack Mounting Kit with front panel and redundand Power supply for FLEXline EAN 0798190109503 UPC 051497113285
6235	DINMK-FLEX	Din Rail Mounting for FLEXline EAN 0798190109510 UPC 051497113292
6236	VH -FLEX	Vesa Mounting Kit for Flexline EAN 0798190109527 UPC 051497113308
6835	AL MV-F-SM	Alternativ Single Mode Module up to 20km/12mi



point to point



switching system

point to point max. distance 160km/99mi in fiber

Switching System up to 1000 endpoints