



Patented, self-sealing design

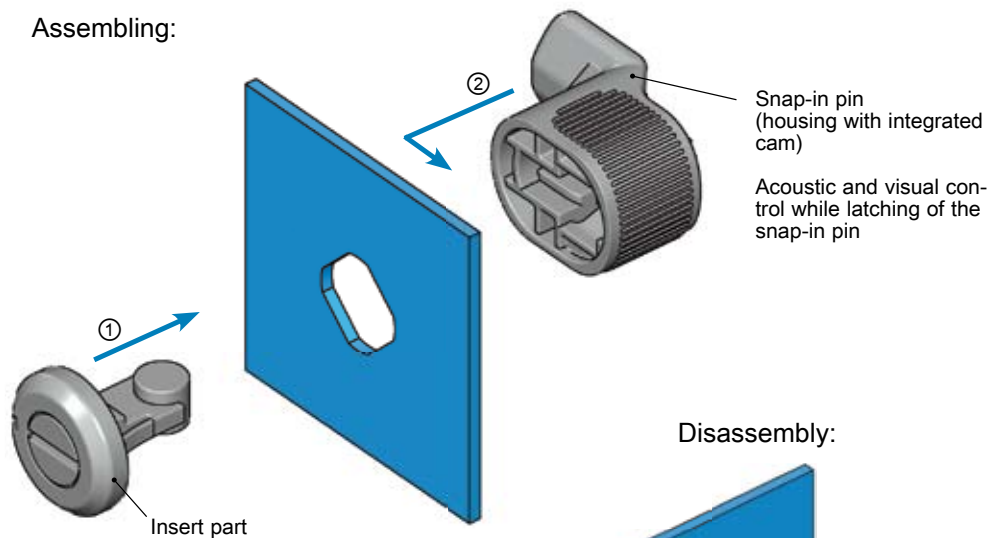
Assembly and disassembly without tools

**Assembly note:**

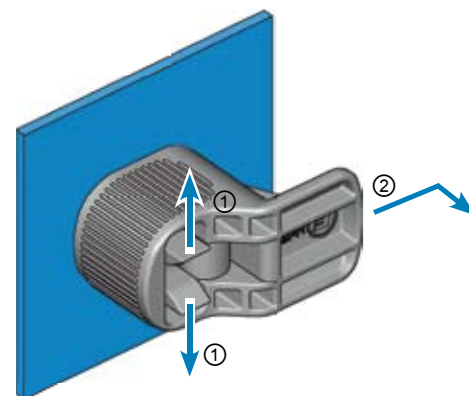
Assembly door stop on the right: Pre-mounted insert part is inserted in the cut out when closed. Then fixed with snap-in pin.

Assembly door stop on the left: Pre-mounted insert part is inserted in the cut out when opened. Then fixed with snap-in pin.

Assembling:

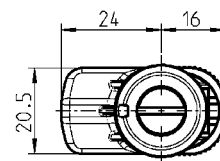
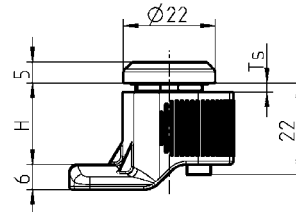
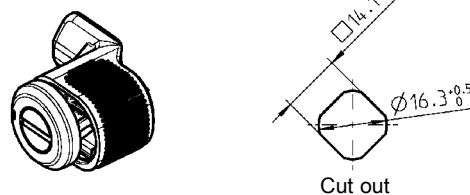
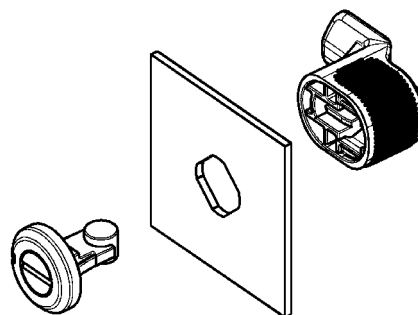


Disassembly:



**Note! IP 69K test passed!**

The basic principle of the patented solution is: the higher the closing force, the greater the tightness. The IP 69K Rating was achieved in the test with a cam pretension of  $\geq 1$  mm and  $\geq 65$  N



**Insert part polyamide GF black; with seal**

Square 6	1022-U89
Triangular 6,5	1022-U90
Slot 1,5 x 3	1022-U91

**Snap-in pin polyamide GF black**

Ts	H	
0,5 - 1,0 including surface coating	7,5	1022-56-01
	13,5	1022-56-02
	19,5	1022-56-03
1,0 - 1,5 including surface coating	7,5	1022-55-01
	13,5	1022-55-02
	19,5	1022-55-03
1,5 - 2,0 including surface coating	7,5	1022-54-01
	13,5	1022-54-02
	19,5	1022-54-03

Other door thickness on request!

Other snap-in pin on request!

Further parts see page

- Key 12B-120