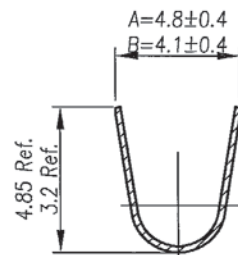
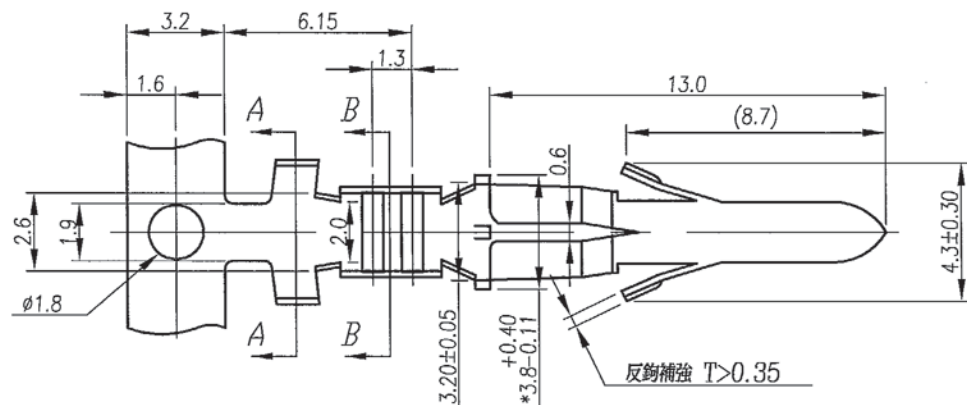


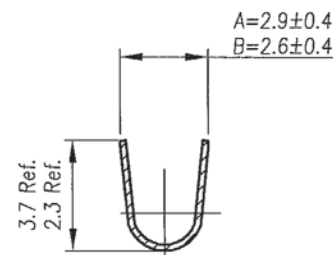
TYPE	PART NO.	WIRE GAUGE AWG	REMARK	
A	T-7005-B3TT00	16~20	REEL	7005T1
A	T-7005-B3TT02	16~20	LOOSE	7005LT1
B	T-7005-B3TT01	20~26	REEL	7005T2
B	T-7005-B3TT03	20~26	LOOSE	7005LT2

7005T
7005LT 0.25T*26.4W*13.0P

REV	MODIFICATION	DATE	DRAW
E	EN-07-0620	96.06.25	Stacy
F	EN-12-0307	2012.03.05	Chris
G	ECN2-00000200	2015.01.26	Stacy



SECTION A-A



SECTION B-B

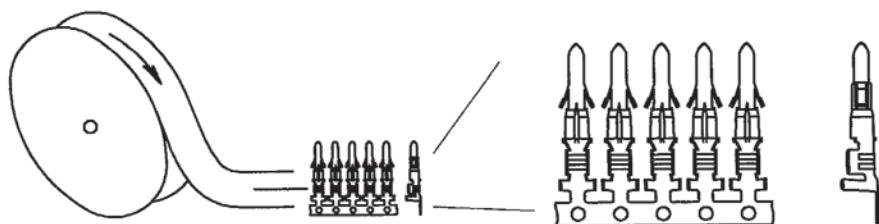
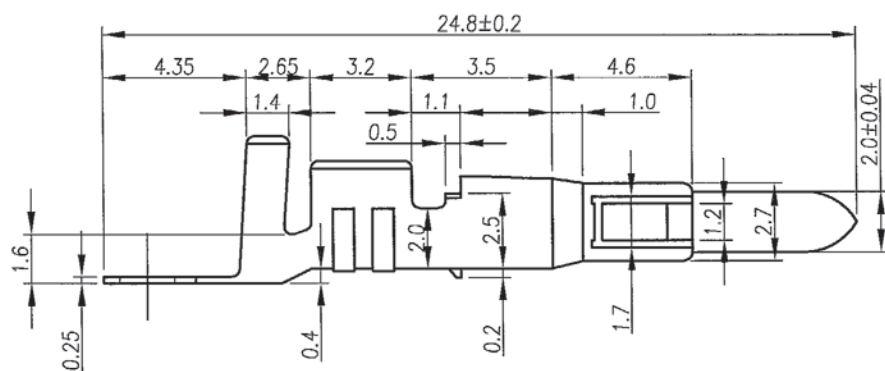
SPECIFICATIONS:

- CURRENT RATING: 15A AC,DC MAX
- VOLTAGE RATING: 300V AC,DC(SINGLE CIRCUIT: 600V)
- TEMPERATURE RANGE: -25°C TO +90°C (INCLUDING TEMPERATURE RISE)
- CONTACT RESISTANCE: INITIAL VALUE/10mΩ MAX. AFTER ENVIRONMENTAL TESTING/15mΩ MAX.
- INSULATION RESISTANCE: 1000MΩ MIN.
- WITHSTANDING VOLTAGE: 1500V AC/MINUTE
- APPLICABLE WIRE: AWG #24 TO #14,0.2 TO 2.0mm
- APPLICABLE PANEL THICKNESS: .031" TO .079" (0.8 TO 2.0mm)
- CONTACT JST FOR DETAILS.



• NOTES:

- 1.MATERIAL : C2680R-H
- 2.PLATING : Comply to RoHS



DIMENSION IN mm [Inch]		PROD. SPEC.	KINGFONT PRECISION INDUSTRIAL CO., LTD.	
TOLERANCE UNLESS OTHERWISE SPECIFIED		PKG. SPEC.	TITLE	
.X±0.10	.X"± 1'	APPROVE <i>Gomy</i>	Ø2.0 MALE CONTACT FOR CRIMPING TYPE	CUSTOMER DRAWING
.XX±0.10	.X"± 0.5'	CHECK <i>Gomy</i>	FILE NO.	DWG NO. T-7005-B3TT0X
.XXX±	.XX"± 0.25'	DRAW <i>Gomy</i>	SIZE A4	PROJ. SHEET 1 / 1
			SCALE 4:1	REV G