

... FLEXline

kvm-tec customized System

INDUSTRYFLEX *line* -

crisis proofed and likes it hot !

for industrial use at temperatures up to 55 degrees ambient

ultra-flat housings, embedded Sound

compatible with standard network components and included kvm-tec Switching Manager Software

Single redundant in copper and single in fiber

Flexline save space in the rack

4 single extender in 1HE

USB 2.0 in house Development, USB-Save feature, USB Emulation Mode & USB Sharing



INDUSTRYFLEX *line*

www.kvm-tec.com

INDUSTRYFLEX *line* single redundant in fiber

INDUSTRYFLEX *line* single redundant is a highly optimized KVM Extender over IP for high temperature ranges. For distances up to 160km in fiber at a resolution of 1920x1200@60Hz For point to point connection or in matrix switching systems up to 1000 endpoints.

INDUSTRYFLEX *line* - crisis proofed and likes it hot !

suitable for high temperatures up to 55 °C and indestructible flash

Function of the factory partition (program memory) in the flash memory: In case of a power failure during an update, the information in the flash is destructible. kvm-tec has taken precautions and so there is a crisis proofed area in the flash which cannot be overwritten and is therefore indestructible. The extender then starts from the crisis proofed area with the correct information.

REDUNDANT for high security in critical applications The perfect tuning of the kvm-tec video compression with low latency (<5ms) enables a delay-free transmission. USB and video are transmitted via a CAT5e/6/7 cable.

The in-house development of USB 2.0 transparent, Freeze last image and USB save feature.

... smart connections

DVI-D/ DVI-I USB2.0 Extender over IP
single redundant in Fiber

max resolution 1920 x 1200 @60 Hz

max distance 160km

up to 55 °C / 131 °F

Sound embedded & Sound analog

Full HD Videos in real time

USB Transmission Rate max 480Mbit/s

Firmware flash upgrade without cable

VGA in - DVI out ,RS 232 interface

DVI extension without loss of quality

Feature - freeze last image

also suitable for 24V systems

Softwarefeatures

Mouse glide &Switch

up to 16 monitors can be operated with one mouse and keyboard

6016iL Local CPU unit

6016iR Remote CON unit

Switching Manager Software



The intelligent software solution from kvm-tec for managing all KVM extenders connected in a matrix switching system up to 1000 endpoints. The local and remote parts can be connected or disconnected by touch or mouse click. For a quick overview, the extenders are arranged in an optimized way and the status of the extenders is highlighted in color.

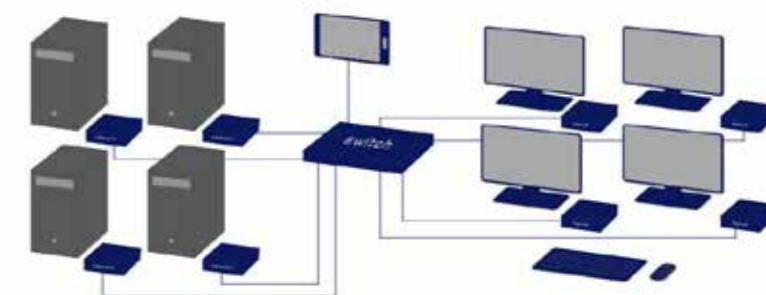
- stores up to 5 various scenarios
- display of the USER sessions
- update management for all extenders in the switching system
- Extender setting definition
- Multihead groups and static partner
- Mouse glide&switch
- 4K Multiview Commander Management
- unlocking kvm-tec upgrades
- displays & Update the current firmware version in the Switching System
- Network environment 1Gigabit Bandwith: IGMP Snooping



SOFTWARE - FEATURE

Mouse Glide & Switch

with only one mouse and one keyboard, multiple PCs can be operated from one workstation. The arrangement of up to 16 monitors via the Switching Manager can be horizontal or vertical and is comparable to a virtual desktop wall. With the stand alone solution up to 4 screens/PCs can be operated and controlled.



CONNECT kvm-tec Extender in Matrix Switching Systems and you can go up to 2000 endpoints and have a super fast switching. You can connect a wide range of different sources (servers, operator workstation, PC, surveillance cameras, video walls and much more) and operate & control the system with centralized management
Network Environment; 1 or 10 Gbit bandwidth
IGMP Snooping (for videosharing)



COLLABORATE with standard network components. kvm-tec Extender are compatible with standard network components and all kvm-tec Extender can collaborate in real time with 60Hz in full HD or 4K resolution



COMMUNICATE in your Switching System with our kvm-tec Switching Manager Software. The local and remote Extender are arranged in an optimized way and the Extender status is highlighted in color. With the kvm-tec Systems computers and servers can be located away from work desk into central server room for a high security level. The environment heat and noise are reduced at the work station and an ergonomic and quiet workplace for all users is possible



CONTROL your application in a much better way with all our in-house developments, like USB 2.0 transmission, video compression without latency, only one cable for USB and video transmission, zero latency. With our unique features each user can access multiple PC sources and can control and operate up to 16 screens with one mouse & keyboard. Video sharing can be done seamless and a central video wall can be integrated for sharing all informations in real time



Technical Specifications

		IND-F Local/CPU	IND-F Remote/CON
Interfaces	Video	1 x DVI in 1x DVI out	1x DVI-D out
	USB 2.0	1 x USB-B to PC	4 x USB-A (devices)
	Audio	1 x 3,5mm jack (Line In) 1 x 3,5mm jack (Line out)	1 x 3,5mm jack Line In) 1Vpp 1 x 3,5mm lack (Speaker) 2x10mW@32Ohm
Video	Signal type Resolution (digital) Signal type Resolution (analog) (opt.) Color mode	DVI-D max. 1920x1200 @ 60Hz DVI-I max. 1920x1200 @ 60Hz 24bit	DVI-D max. 1920x1200 @ 60Hz DVI-I max. 1920x1200 @ 60Hz 24bit
Audio	Type Bandwidth	analogue / embedded 16bit, 44kHz, 2ch	analogue/embedded 16 bit, 44kHz, 2ch
USB	Specification Type Rate	USB 2.0 transparent max. 480 Mbit/s mass storage devices & camera optional	USB 2.0 transparent max. 480 Mbit/s mass storage devices & camera optional
RS 232 interface		transparent up to 115200 baud +/-5V,CTS/DTR handshake	transparent up to 115200 baud +/-5V,CTS/DTR handshake
Casing	Material Dimension (w x H x D) Weight Shipping weight SET 1895 g /4.17 lb	anodized aluminum 108 x 43 x 107,5 mm 4.25 x 1.69 x 4,23 inch 295 g / 0.65 lb shipment weight 1005g/2,21 lb	anodized aluminum 108 x 43x 107,5 mm 4.25 x 1.69 x 4.29 inch 295 g/ 0.65 lb shipment weight 890 g/ 1.96lb
Power Supply	Type	wall power supply unit 12 VDC 1A redundant max 35V	wall power supply unit 12 VDC 1A redundant max 35V
Power Input	Operation	12W	12W without USB devices
Operation environment	Temperature Humidity	0 to +55 °C (32 to 131 °F) < 80%, non -condensing	0 to +55 °C (32 to 131 °F) < 80%, non- condensing
Storage environment	Temperature Humidity	-25 to 80 °C /-13 to 176 °F < 80%, non condensing	-25 to 80 °C /-13 to 176 °F < 80%, non condensing
Cooling		free air convection	free air convection
MTBF		82.820 calculated hours approx. 10 years	82.820 calculated hours approx. 10 years
Conformity		CE, FCC	CE, FCC
Warranty		2 years (5 years optional)	2 years (5 years optional)
Delivery content	Devices	1 x IND-F local (CPU)	1 x IND-F remote (CON)
	Power Supply	1 x wall power supply unit 12V 1A (EU-plug or INT plug)	1 x wall power supply unit 12V 1A (EU-plug or INT plug)
	Cables	1 x DVI - DVI cable 1,8m (5.9ft) 1 x USB cable 1,8m (5.9ft)	
	SFP module	2 x SFP module multimode up to 500 m /1640ft duplex LC	2 x SFP module multimode up to 500m /1640ft duplex LC
	Mounting	4 x rubber feet	4 x rubber feet
	Manual	Quickinstallation manual download: www.kvm-tec	

Part Number & Short description

Part No.	Order No.	Short description
6016i	IND-F SET	INDUSTRYFLEXline Extender Single Fiber – Set EAN 0798190109855 UPC 051497113636
6016iL	IND-FL	INDUSTRYFLEXline Extender Single Fiber –Local Unit /CPU EAN 0798190109862 UPC 051497113643
6016iR	IND-FR	INDUSTRYFLEXline Extender Single Fiber –Remote Unit /CON EAN 0798190109879 UPC 051497113650
9003 9002	GV5JU GV5J	Warranty extension to 5 years per UNIT Warranty extension to 5 years per SET
ADD-ONS 6231	UMK-FLEX	Rack Mounting Kit for under the table for FLEXline EAN 0798190109466 UPC 051497113247
6232	RMK-FLEX-F	Rack Mounting Kit with front panel for FLEXline EAN 0798190109473 UPC 051497113254
6233	RMK-FLEX-FN	Rack Mounting Kit with front panel and Power supply EAN 0798190109480 UPC 051497113261
6234	RMK-FLEX	Rack Mounting Kit with front panel and redundand Power supply for FLEXline EAN 0798190109503 UPC 051497113285
6235	DINMK-FLEX	Din Rail Mounting for FLEXline EAN 0798190109510 UPC 051497113292
6236	VH -FLEX	Vesa Mounting Kit for Flexline EAN 0798190109527 UPC 051497113308
6835	AL MV-F-SM	Alternativ Single Mode Module up to 20km/12mi



point to point



switching system

point to point max. distance 160km/99mi in fiber

Switching System up to 1000 endpoints