

更改 REV	設變內容 MODIFICATION	日期 DATE	修改 DRAW
C	EN-11-0802	2011.08.02	Stacy
D	ECN2-00000009	2013.11.21	EvanTeng
E	ECN2-00000154	2014.09.25	Stacy

**MATERIAL**

HOUSING: HIGH-TEMP.  
 ACTUATOR: HIGH-TEMP.  
 CONTACT: PHOSPHOR BRONZE. PLATING: ALL TIN, LEAD FREE  
 HOLDDOWN: BRASS. PLATING: ALL TIN, LEAD FREE.

**ELECTRICAL**

VOLTAGE: 50V MAX.  
 CURRENT: 0.5A MAX.  
 DIELECTRIC WITHSTANDING VOLTAGE: 250 VAC.  
 INSULATION RESISTANCE: 50 MEGAOHMS MIN.  
 CONTACT RESISTANCE: 20 MILLIOHMS MAX.

**ENVIRONMENTAL**

TEMPERATURE RANGE: -20°C TO 85°C.

**FEATURE AND SPECIFICATIONS**

SIZES 03 TO 61 PIN.  
 FOR 0.3mm THICKNESS FFC/FPC.

**PART NO.**

FPCTF-T XX TT A0 X 0-P921

CONTACTS NO.: 03-61  
 0: Tube Packing  
 1: Reel Packing



DIMENSION IN mm [Inch]		*: Inspection Item	金峰精密工業股份有限公司 KINGFONT PRECISION INDUSTRIAL CO., LTD.	
TOLERANCE UNLESS OTHERWISE SPECIFIED		(NO.): Cp/Cpk and SPC Control Item	名稱 FPC/FFC 0.5 mm TITLE ZIF SMT Side Entry Upper Contact	
.X±0.15	.X'±	審核 APPROVE <i>Cam</i>	案號 FILE NO.	圖號 DWG NO. FPCTF-TXXTTA0X0-P921
.XX±0.10	.X'±	核對 CHECK <i>Yany</i>	圖紙 A4 角法 PROJ. 張數 1 / 4 比例 SCALE 4:1 更改 REV E	
.XXX±0.05	.XX'±	製圖 DRAW <i>SJ</i>	SIZE A4	

1 2 3 4 5 6 7 8

更改 REV	設 變 內 容 MODIFICATION	日 期 DATE	修 改 DRAW
C	EN-11-0802	2011.08.02	Stacy
D	ECN2-00000009	2013.11.21	EvanTeng
E	ECN2-00000154	2014.09.25	Stacy

■ DIMENSION TABLE

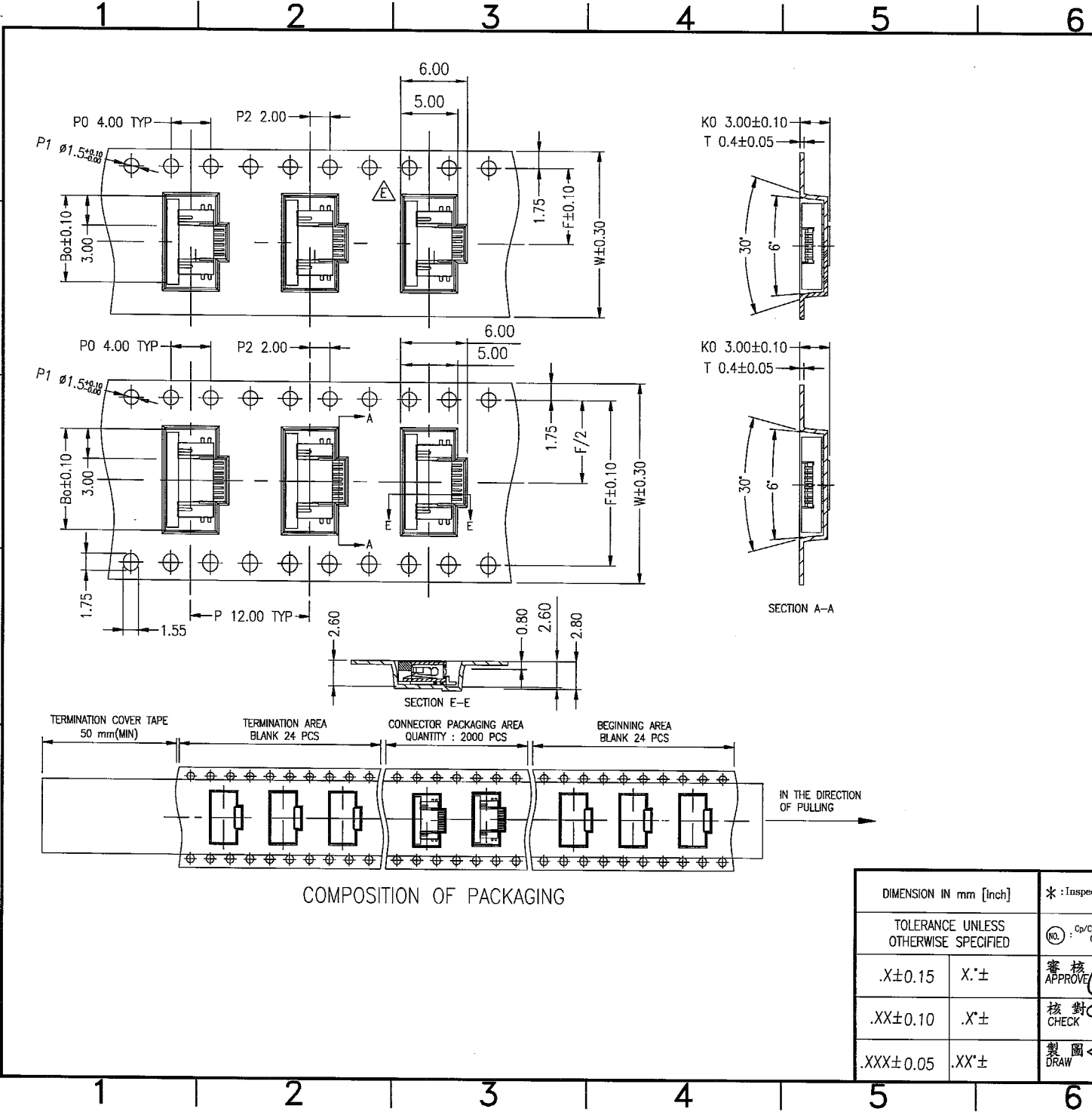
Circuits	Dimension					Circuits	Dimension					Circuits	Dimension				
	A	B	C	D	E		A	B	C	D	E		A	B	C	D	E
3	1.00	2.10	6.10	8.10	7.40	23	11.00	12.10	16.10	18.10	17.40	43	21.00	22.10	26.10	28.10	27.40
4	1.50	2.60	6.60	8.60	7.90	24	11.50	12.60	16.60	18.60	17.90	44	21.50	22.60	26.60	28.60	27.90
5	2.00	3.10	7.10	9.10	8.40	25	12.00	13.10	17.10	19.10	18.40	45	22.00	23.10	27.10	29.10	28.40
6	2.50	3.60	7.60	9.60	8.90	26	12.50	13.60	17.60	19.60	18.90	46	22.50	23.60	27.60	29.60	28.90
7	3.00	4.10	8.10	10.10	9.40	27	13.00	14.10	18.10	20.10	19.40	47	23.00	24.10	28.10	30.10	29.40
8	3.50	4.60	8.60	10.60	9.90	28	13.50	14.60	18.60	20.60	19.90	48	23.50	24.60	28.60	30.60	29.90
9	4.00	5.10	9.10	11.10	10.40	29	14.00	15.10	19.10	21.10	20.40	49	24.00	25.10	29.10	31.10	30.40
10	4.50	5.60	9.60	11.60	10.90	30	14.50	15.60	19.60	21.60	20.90	50	24.50	25.60	29.60	31.60	30.90
11	5.00	6.10	10.10	12.10	11.40	31	15.00	16.10	20.10	22.10	21.40	51	25.00	26.10	30.10	32.10	31.40
12	5.50	6.60	10.60	12.60	11.90	32	15.50	16.60	20.60	22.60	21.90	52	25.50	26.60	30.60	32.60	31.90
13	6.00	7.10	11.10	13.10	12.40	33	16.00	17.10	21.10	23.10	22.40	53	26.00	27.10	31.10	33.10	32.40
14	6.50	7.60	11.60	13.60	12.90	34	16.50	17.60	21.60	23.60	22.90	54	26.50	27.60	31.60	33.60	32.90
15	7.00	8.10	12.10	14.10	13.40	35	17.00	18.10	22.10	24.10	23.40	55	27.00	28.10	32.10	34.10	33.40
16	7.50	8.60	12.60	14.60	13.90	36	17.50	18.60	22.60	24.60	23.90	56	27.50	28.60	32.60	34.60	33.90
17	8.00	9.10	13.10	15.10	14.40	37	18.00	19.10	23.10	25.10	24.40	57	28.00	29.10	33.10	35.10	34.40
18	8.50	9.60	13.60	15.60	14.90	38	18.50	19.60	23.60	25.60	24.90	58	28.50	29.60	33.60	35.60	34.90
19	9.00	10.10	14.10	16.10	15.40	39	19.00	20.10	24.10	26.10	25.40	59	29.00	30.10	34.10	36.10	35.40
20	9.50	10.60	14.60	16.60	15.90	40	19.50	20.60	24.60	26.60	25.90	60	29.50	30.60	34.60	36.60	35.90
21	10.00	11.10	15.10	17.10	16.40	41	20.00	21.10	25.10	27.10	26.40	61	30.00	31.10	35.10	37.10	36.40
22	10.50	11.60	15.60	17.60	16.90	42	20.50	21.60	25.60	27.60	26.90						



(P190)

DIMENSION IN mm [Inch]		*: Inspection Item	<b>金峰精密工業股份有限公司</b> KINGFONT PRECISION INDUSTRIAL CO., LTD.	
TOLERANCE UNLESS OTHERWISE SPECIFIED		(NO.) : Cp/Cpk and SPC Control Item 審核 APPROVE <i>Gum</i> 核對 CHECK <i>Fery</i> 製圖 DRAW <i>SJS</i>	名稱 TITLE FPC/FFC 0.5 mm ZIF SMT Side Entry Upper Contact	
.X±0.15	.X'±		圖號 DWG NO. FPCTF-TXXTTA0X0-P921 圖紙 SIZE A4	張數 SHEET 2 / 4 更改 REV E
.XX±0.10	.X'±		比例 SCALE 4:1	
.XXX±0.05	.XX'±			

1 2 3 4 5 6 7 8 QR-2100-042



更改 REV	設變內容 MODIFICATION	日期 DATE	修改 DRAW
C	EN-11-0802	2011.08.02	Stacy
D	ECN2-00000009	2013.11.21	EvanTeng
E	ECN2-00000154	2014.09.25	Stacy

- NOTE:
- 10 sprocket hole pitch cumulative tolerance  $\pm 0.2\text{mm}$ .
  - A measured on a plane 0.3mm above the bottom of the pocket.
  - Material: Transparent Conductive Polystyrene.
  - Thickness:  $0.40 \pm 0.05\text{mm}$  /  $W56-0.50 \pm 0.05$ .
  - Packing length per 22" reel: 24.60 Meters.
  - Component loader 13" reel: 2000 pcs.
  - For tape width (dimension W) 24mm a pilot hole is provided on one side.  
For tape width (dimension W) 32mm and 44mm  $\cdot 56\text{mm}$  pilot holes are provided on both side.
  - The top tape all of pull about 0.1N to 1.3N (10g to 130g).

DIMENSION TABLE

NO. OF POS	ITEM			NO. OF POS	ITEM		
	Bo	W	F		Bo	W	F
3	8.7	24	11.5	33	23.7	44	40.4
4	9.2	24	11.5	34	24.2	44	40.4
5	9.7	24	11.5	35	24.7	44	40.4
6	10.2	24	11.5	36	25.2	44	40.4
7	10.7	24	11.5	37	25.7	44	40.4
8	11.2	24	11.5	38	26.2	44	40.4
9	11.7	24	11.5	39	26.7	44	40.4
10	12.2	24	11.5	40	27.2	44	40.4
11	12.7	24	11.5	41	27.7	44	40.4
12	13.2	24	11.5	42	28.2	44	40.4
13	13.7	24	11.5	43	28.7	44	40.4
14	14.2	24	11.5	44	29.2	44	40.4
15	14.7	24	11.5	45	29.7	44	40.4
16	15.2	24	11.5	46	30.2	44	40.4
17	15.7	32	28.4	47	30.7	44	40.4
18	16.2	32	28.4	48	31.2	44	40.4
19	16.7	32	28.4	49	31.7	56	52.4
20	17.2	32	28.4	50	32.2	56	52.4
21	17.7	32	28.4	51	32.7	56	52.4
22	18.2	32	28.4	52	33.2	56	52.4
23	18.7	32	28.4	53	33.7	56	52.4
24	19.2	32	28.4	54	34.2	56	52.4
25	19.7	44	40.4	55	34.7	56	52.4
26	20.2	44	40.4	56	35.2	56	52.4
27	20.7	44	40.4	57	35.7	56	52.4
28	21.2	44	40.4	58	36.2	56	52.4
29	21.7	44	40.4	59	36.7	56	52.4
30	22.2	44	40.4	60	37.2	56	52.4
31	22.7	44	40.4	61	37.7	56	52.4
32	23.2	44	40.4				



(P190)

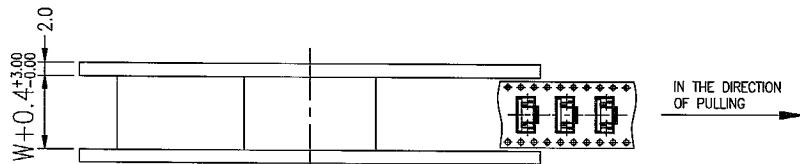
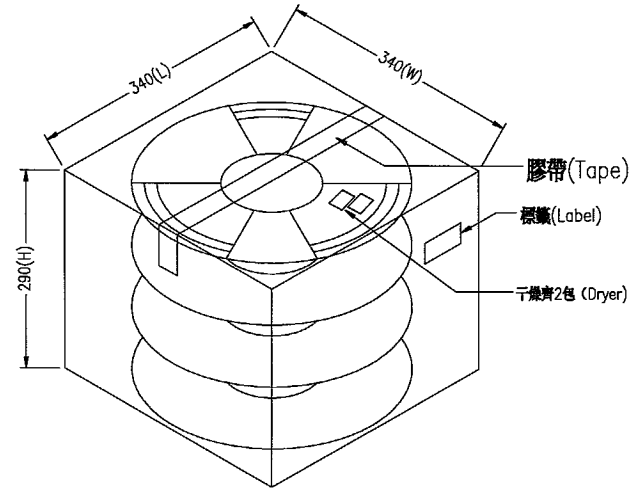
DIMENSION IN mm [Inch]		*: Inspection Item	金峰精密工業股份有限公司 KINGFONT PRECISION INDUSTRIAL CO., LTD.	
TOLERANCE UNLESS OTHERWISE SPECIFIED		(No.): Cp/Cpk and SPC Control Item	名稱 FPC/FFC 0.5 mm TITLE ZIF SMT Side Entry Upper Contact	
.X $\pm$ 0.15	X' $\pm$	審核 APPROVE <i>Cam</i>	案號 FILE NO.	圖號 DWG NO. FPCTF-TXXTA0X0-P921
.XX $\pm$ 0.10	.X' $\pm$	核對 CHECK <i>For</i>	圖紙 SIZE A4	角法 PROJ.  張數 SHEET 3 / 4
.XXX $\pm$ 0.05	.XX' $\pm$	製圖 DRAW <i>SX</i>	比例 SCALE 4:1	更改 REV E

1 2 3 4 5 6 7 8

更改 REV	設 變 內 容 MODIFICATION	日 期 DATE	修 改 DRAW
C	EN-11-0802	2011.08.02	Stacy
D	ECN2-00000009	2013.11.21	EvanTeng
E	ECN2-00000154	2014.09.25	Stacy

NOTE:

1. REEL MATERIAL: PS
2. CARRIER MATERIAL: PS
3. COVER TAPE MATERIAL: PS
4. COVER TAPE REEL STRENGTH: 13"
5. QUANTITY: 2000pcs/REEL  
DETAIL QUANTIT: SEE TABLE
6. 外箱內腔尺寸: 340\*340\*290mm
7. 箱內所有卷盤須用一個防水袋裝好, 放兩包干燥劑並密封,
8. 裝箱後, 如有上下間隙需用緩沖物填滿再封箱.

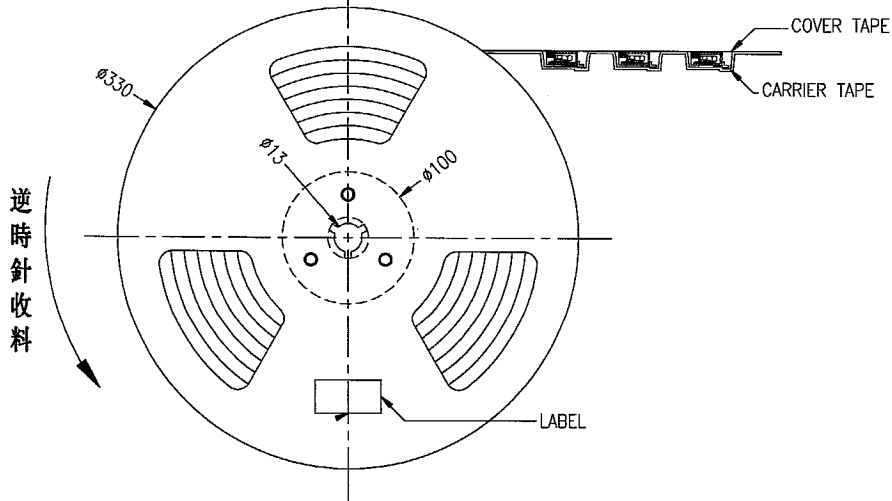


DIMENSION TABLE

NO. OF POS	NO.OF REEL	PACKAGING QUANTITY(PCS)
3~16	10	20000
17~24	8	16000
25~48	6	12000
49~61	4	8000



(P190)



DIMENSION IN mm [Inch]		*: Inspection Item	金峰精密工業股份有限公司 KINGFONT PRECISION INDUSTRIAL CO., LTD.	
TOLERANCE UNLESS OTHERWISE SPECIFIED		(NO.): Cp/Cpk and SPC Control Item	名稱 TITLE FPC/FCC 0.5 mm ZIF SMT Side Entry Upper Contact	
.X±0.15	.X'±	審核 APPROVE <i>Gomy</i>	案號 FILE NO.	圖號 DWG NO. FPCTF-TXXTTA0X0-P921
.XX±0.10	.X'±	核對 CHECK <i>Larry</i>	圖紙 SIZE A4	角法 PROJ.  張數 SHEET 4 / 4
.XXX±0.05	.XX'±	製圖 DRAW <i>[Signature]</i>	比例 SCALE 4:1	更改 REV E

1 2 3 4 5 6 7 8 QR-2100-042