

MSQ Magsquare | MagWheel | MagMount

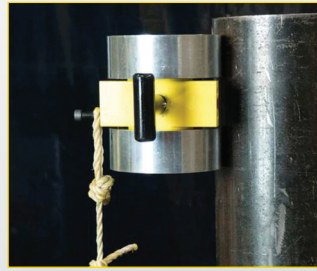
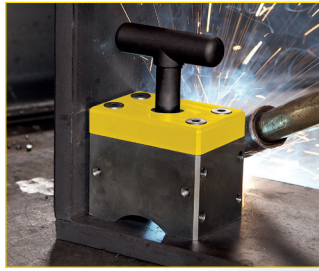
Magnet - Clamping aids, switchable

MSQ Magsquare is a universal welding and assembly aid. The magnetic force is particularly strong on the 3 long sides. Several threaded holes are available for fastening pole extensions or attaching to devices.

The Magwheel is a switchable magnetic wheel being a further development of the Magsquare. It can be rolled even while it is sticking. The Magmount can serve as a magnetic holder, e.g. for tripods or devices.

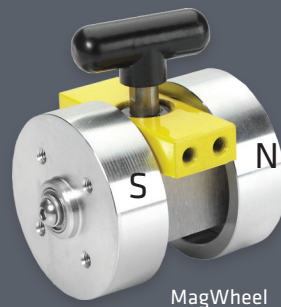


MSQ

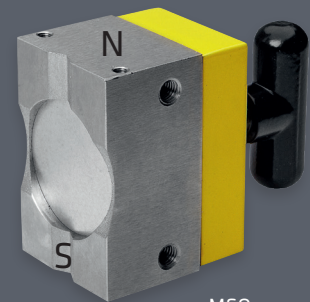


Features

- ☑ Magnets turns completely OFF and stays clean
- ☑ Usable for round and square workpieces
- ☑ Magnetic force is strong on the 3 long sides, weak on the 2 short sides (MSQ Magsquare)
- ☑ Fastening thread as assembly aid
- ☑ MagWheel - applications: Positioning and guiding, feeding of sheet metals, pipe handling, assembly and manufacturing.



MagWheel



MSQ

Technical data

	Dimensions [LxWxH]	Adhesive force	Weight	No.
	[mm]	[kg]	[kg]	
MSQ 165	48 x 31 x 65	68	0.3	61939
MSQ 400	64 x 42 x 90	181	0.9	60971
MSQ 600	75 x 52 x 106	272	1.4	60972
MSQ 1000	72 x 108 x 147	454	3.4	60973
MagWheel 150	68 x 52 x 72	29	1,0	64398
MagWheel 600	101 x 92 x 122	132	3,0	64399
MagMount 235	98 x 68 x 45	106	0,5	64649