



YUTIAN FUTAI INTERNATIONAL TRADE CO.,LTD.

Room 502, Unit 5, Building No. 9, Huadu Mansion, Yutian County ,Tangshan City,
Hebei Province,P.R.China 064100
Tel: 86-010-15510633055 / Fax: 86-0315-6351550
E-mail:asiaking_vet@163.com

CATALOGUE FOR CATTLE FARM EQUIPMENTS

YUTIAN FUTAI INTERNATIONAL TRADE CO.,LTD.

Houhu industrial zone, Yutian county, Hebei province, China

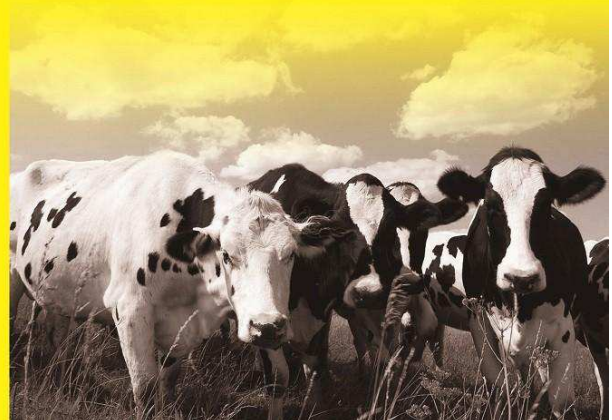
Website:<http://husbandry-poultry.en.alibaba.com> **and**

<http://www.europages.co.uk/YUTIAN-FUTAI-INTERNATIONAL-TRADE-CO-LTD/00000005286900-001.html>

Tel: 86-010-15510633055 / Fax: 86-0315-6351550

E-mail:asiaking_vet@163.com

Contacting Person:Mr.will



Skype:asiaking_vet@hotmail.com
Attn:Mr.will

Whatsapp:0086-15510633055
Personal Cell:0086-010-15510633055



YUTIAN FUTAI INTERNATIONAL TRADE CO.,LTD.

Room 502, Unit 5, Building No. 9, Huadu Mansion, Yutian County ,Tangshan City,
 Hebei Province,P.R.China 064100
 Tel: 86-010-15510633055 / Fax: 86-0315-6351550
 E-mail:asiaking_vet@163.com

Drinking Equipments

4M Trough Drinker

The world longest, heaviest, biggest polyethylene heat preservation trough drinker



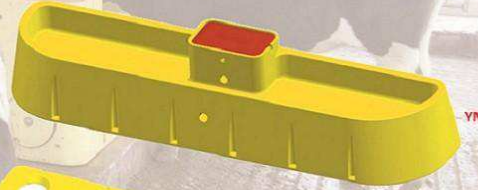
High Temperature Resistant
 +60 °C No Deformation,



Low Temperature Resistant
 -60 °C Frost-Protection



YM403



YM405



YM408



YM407



YM404



10 Years Quality Warranty

Item Name	Model	Length(cm)	Width(cm)	Height(cm)	Drinking Height (cm)	Weight(kg)	Heating Mode	Power(W)	Volume	Cattle No.
4M Trough Drinker (No Cover)	YM407	400	70	62.5	47	130	Bottom Heating Pipes	1600	380	220heads
4M Trough Drinker (With Cover)	YM408	400	70	62.5	47	130	Bottom Heating Pipes	1600	380	220heads



4M High strong plastic thermal trough drinker is characteristic with perfect frost-protection functions. It can make the drinking equipments offer services efficiently all seasons. Especially, the problem of lacking water due to freezing in winter is fully solved.

In extremely cold area, it can match with electric heating fitting to supply suitable water temperature. That make sure healthy and high productivity of dairy catles. The biggest merit is energy-saving for reducing costs of ranches. Excellent heat-protection function is superior to 3 times of single layer of trough drinker which is without thermal function.

02

03

Skype:asiaking_vet@hotmail.com
 Attn:Mr.will

Whatsapp:0086-15510633055
 Personal Cell:0086-010-15510633055



YUTIAN FUTAI INTERNATIONAL TRADE CO.,LTD.

Room 502, Unit 5, Building No. 9, Huadu Mansion, Yutian County, Tangshan City,
 Hebei Province, P.R.China 064100
 Tel: 86-010-15510633055 / Fax: 86-0315-6351550
 E-mail: asiaking_vet@163.com

Drinking Equipments

2.0M&2.44M Trough Drinker

1. Powerful polyethylene material, sturdy and durable, anti-acid, anti-corrosion, no peeling-out, anti-quake, more than 20 years lifetime.
2. The design is capable for heads of cattles for drinking. One standard set drinker is able to supply 50 heads.
3. Temperature-protection design adjusting to low water level assure the cold water drinking in summer.
4. Big volume adhered to high-speed water inquiring valve for timely drinking.
5. Big discharging hole will wash away the left water, purifies rapidly. Keep Clean
6. Plastic raking formation in one time, seamless, closed ends, hard to adhere by microorganism.
7. The patented water supply valve is easily operated, adjust water level any time, automatically supplemented water.
8. Different heating fittings for different areas uses.



YM03



YM01



Item Name	Model	Length(cm)	Width(cm)	Height(cm)	Drinking Height (cm)	Weight(kg)	Heating Mode	Power(W)	Volume	Cattle No.
2.0M Trough Drinker	YM03	200	56	72	56	37	Unheated	800	150	100heads
2.44M Trough Drinker	YM01	244	81	71	56	81	Heating Film	1500	284	150heads

04

2.3M Trough Drinker



YM02



YM04



10 Years Quality Warranty

1. Automatically supply, keep water level
2. Every trough drinker can supply 15-150 heads of dairy cattles drinking. Provide many drinking positions to avoid fighting.
3. Special heat protection material and electric heating design, keep 5°C-50°C water temperature. In -30°C winter, it still works.
4. Special purpose valve and special design, keep off contamination, guarantee clean water.
5. Big size discharging valve, easily cleaning, discharging water in 15 seconds.
6. No need to maintenance. Last more than 20 years for continuous uses.



Item Name	Model	Length(cm)	Width(cm)	Height(cm)	Drinking Height (cm)	Weight(kg)	Heating Mode	Power(W)	Volume	Cattle No.
2.3M Thermal Trough Drinker	YM04	230	58	58.5	48	46	Unheated	900	128	100heads
2.3M Thermal Trough Drinker	YM02	230	58	52.5	48	70	Heating Film	900	90	80heads

05

Drinking Equipments

Drinking Equipments

10 Years Quality Warranty



YMBX02



YMBX01



YMS001



YMQN002



YMQN001



Item Name	Model	Length(cm)	Width(cm)	Height(cm)	Drinking Height (cm)	Weight(kg)	Heating Mode	Power(W)	Volume	Cattle No.
Single Tap-Cup Drinking Equipment	YMBX01	56	46	51	51	18	Unheated	300	15	20heads
Single Tap-Cup Drinking Equipment	YMBX02	91	47	51	51	37	Unheated	600	25	40heads
Single Tap-Cup Drinking Equipment	YMS001	366	63	72	63	98	Unheated	800	220	150heads
Single Tap-Cup Drinking Equipment	YMQN001	80	56	64	66	37	Unheated	600	18	30heads
Single Tap-Cup Drinking Equipment	YMQN002	132	60	64	66	41	Unheated	600	61	70heads

06

07

Skype: asiaking_vet@hotmail.com
 Attn: Mr. will

Whatsapp: 0086-15510633055
 Personal Cell: 0086-010-15510633055

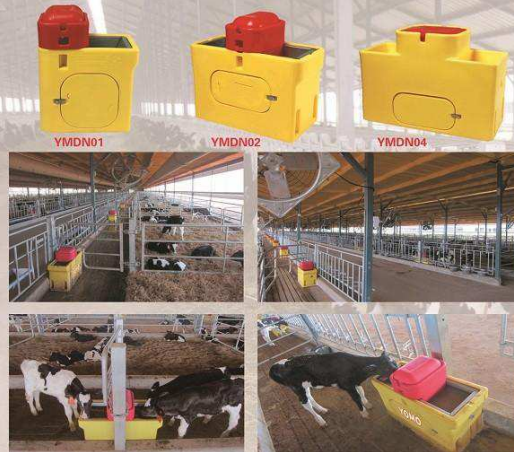


YUTIAN FUTAI INTERNATIONAL TRADE CO.,LTD.

Room 502, Unit 5, Building No. 9, Huadu Mansion, Yutian County, Tangshan City,
Hebei Province, P.R.China 064100
Tel: 86-010-15510633055 / Fax: 86-0315-6351550
E-mail: asiaking_vet@163.com

Drinking Equipments

Calf Trough Drinker



1. Strong Food-Grade polyethylene body; 304# stainless steel material inside; full polyethylene rolling plastic trough drinker.
2. Voltage 220V (Standard Voltage), Current 2.5A, Heating Power 300W
3. Temperature Range 10-22°C, suitable for calf uses
4. Constant temperature heating system fixed in the stainless steel layer bottom for better heating results; Full polyethylene material keeps temperature better and heating plate assembling simply.
5. Filling water quickly in 5 seconds finished; supplement water any time for dairy cattle; Reaching to the fixed drinking height.
6. Big - size water discharging opening hole in 5 seconds of discharging; easy cleaning

Item Name	Model	Length(cm)	Width(cm)	Height(cm)	Dining Height (cm)	Weight(kg)	Heating Mode	Power(W)	Volume	Cattle No.
Calf Trough Drinker (Stainless Steel Inside Layer)	YMDN01	51	37	64	46	17	Bottom Electric Heating	300	6	20heads
Calf Trough Drinker (Stainless Steel Inside Layer)	YMDN02	72	37	64	46	20	Bottom Electric Heating	600	8	40heads
Calf Trough Drinker (PE)	YMDN04	85	36	64	46	20	Immersed heating plate	500	16	40heads

08

Thermal Floating Ball Trough Drinker



1. Automatically supply, keep water level.
2. Every trough drinker can supply 15-150 heads of dairy cattle drinking. Provide many drinking positions to avoid fighting.
3. Special heat protection material and electric heating design, keep 5°C-20°C water temperature. In -30°C winter, it still works.
4. Special purpose valve and special design, keep off contamination, guarantee clean water.
5. Big size discharging valve, easily cleaning, discharging water (in 15 seconds).
6. No need to maintenance. Last more than 20 years for continuous uses.

Item Name	Model	Length(cm)	Width(cm)	Height(cm)	Dining Height (cm)	Weight(kg)	Heating Mode	Power(W)	Volume	Cattle No.
Single Floating Ball Trough Drinker	YMFQ01	71	51	64	48	24	Immersed heating plate	300	42	20heads
Double Floating Ball Trough Drinker	YMFQ02	109	61	64	48	41	Immersed heating plate	500	106	30heads
Four Floating Ball Trough Drinker	YMFQ04	109	89	64	48	69	Immersed heating plate	800	172	100heads
Six Floating Ball Trough Drinker	YMFQ06	184	99	64	48	95	Immersed heating plate	1500	208	150heads
Nine Floating Ball Trough Drinker	YMFQ10	100	60	56	48	37	Immersed heating plate	500	80	30heads

09

Calf Equipments

Electric Heating And Accessories

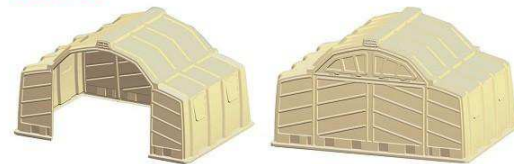


Immersed heating plate, insulation grade compliant with 3C and CE standard; the heating part is made of pressed casting aluminum; Spray high temperature oil in outside protection; Electricity cover made by Galvanized chromium-free meal; 3 phases electric lines with 1.8m length; Full immersed heating plate, constant temperature, anti-corrosion, dry burning-resistant protection, anti-creeping, environmental-protection, safety.

1. Electric heating plate stored in PE trough drinker and stainless steel trough drinker and hot galvanized trough drinker and other type containers.
2. Electric heating plate temperature instructions: When water temperature decreases to 10 or 15°C, temperature adjusting controller start to heat. During heating, the water in trough drinker is spiral so that it makes the temperature rising. When water temperature raise to 21 or 25°C (around the heating plate areas), the controller stops automatically.
3. At the time of using heating plate, electricity must assemble anti-creeping protector or connect ground wire
4. Heating plate models: 300w, 500w, 800w, 1500w, 2000w, choosing as volume and area situation.

10

Calf Hut



Calf hut is not only offering a clean environment for calves; reducing disease happened protecting cross-infection between herds, but also eating feeds earlier. This will strengthen body, speed up growing. They are convenient to shift and clean. As a result, calves' immunity, resistance to the outside world complex environment ability is enhancing after birth. Also, the calves has the fitting environment living in huts. The small calf huts attached with colonial feeding drums, feeding drum cover, feeding bottle, heating light, hot galvanized fence. The big calf huts designed with pulled rear door which will have good ventilation in Summer, keep warm in winter. The huts also can match with thermal trough drinker or calf automatic feeders.

Item Name	Model	Length(cm)	Width(cm)	Height(cm)	Weight(kg)	Cattle No.
Calf Huts	YMDN01	220	145	145	45	2 heads
Luxury Calf Huts	YMDN02	220	145	145	50	2 heads
Group Calf Huts	YMDN08	220	333	183	98	8 heads
Calf Huts	YMDN03	150	125	120	35	1 head

11

Skype: asiaking_vet@hotmail.com
Attn: Mr. will

Whatsapp: 0086-15510633055
Personal Cell: 0086-010-15510633055



YUTIAN FUTAI INTERNATIONAL TRADE CO.,LTD.

Room 502, Unit 5, Building No. 9, Huadu Mansion, Yutian County, Tangshan City,
Hebei Province, P.R.China 064100
Tel: 86-010-15510633055 / Fax: 86-0315-6351550
E-mail: asiaking_vet@163.com

Honor&Certificate

Calf Pen



Composition: front board, rear board, side board, feeding bottle, feeding drums, etc.
Features: mould pressed polyethylene board formed, steel connecting assembly, be able to operate by one person. Door and feeding drums height can be adjustable. Easy for sterilization for calves health.
Front Board: hot rolling plastic, with door, adjustable height, 2pcs of feeding drums assembled, 2pcs of 9.5L black plastic drums.
Side Board: L-Type solid steel bolts.
Rear Board: adjustable ventilation opening, parallel combination.

Item Name	Model	Length(cm)	Width(cm)	Height(cm)	Weight(kg)	Cattle No.
Calf Pen	YMDNL01	183	122	114	37	1 head
Calf Movable Pen	YMDNL02	150	120	90	14	1 head

*Perfect Quality Sincere Service
Creative Cooperation
Advance Technology*



Cattle Equipments

Pillory

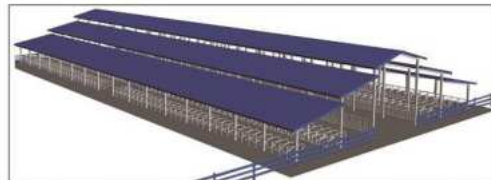


Composition: Standing Pole, Pillory Activating Pole, Pillory Horizontal Pole, Lock Part.
Features:
1. According to different cattles' size and ages, set up different size cattle pillory.
2. At the locking status, pillory can lock the dairy to make them cozy and eating freely.
3. At the opening status, cattles can enter and get out freely.
4. Be able to lock and discharge the crowds of dairy or only lock one dairy or several.
5. When emergency happened, pillory can be open rapidly or be open reversibly to discharge.
6. Matched with rubber pad to reduce noise.

Cow Bed



Composition: vertical column, lying fence, pillar, neck bar, breast barrier bar, barrier horizontal bar, lying accessories.
Features:
1. Adjustable breast barrier bar and neck bar. Suitable for different weight dairy cattle uses.
2. According to the inhabiting life of dairy cattles, the cow beds can make them free inhabitation.
3. Guarantee 90% ratio for lying rest.
4. Improve udder cleanliness, reduce mastitis disease happened, offer a convenient living environment for cattles.



Skype: asiaking_vet@hotmail.com
Attn: Mr. will

Whatsapp: 0086-15510633055
Personal Cell: 0086-010-15510633055

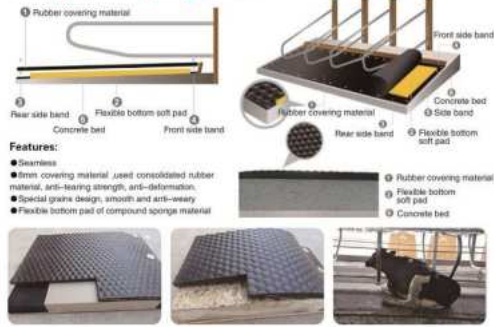


YUTIAN FUTAI INTERNATIONAL TRADE CO.,LTD.

Room 502, Unit 5, Building No. 9, Huadu Mansion, Yutian County, Tangshan City,
Hebei Province, P.R.China 064100
Tel: 86-010-15510633055 / Fax: 86-0315-6351550
E-mail: asiaking_vet@163.com

Cattle Equipments

Compound Sponge Pad



Features:

- Seamless
- Iron covering material used consolidated rubber material, anti-tearing strength, anti-deformation.
- Special grain design, smooth and anti-wear.
- Flexible bottom pad of compound sponge material



Rubber Pad



Material: pre-environment rubber powder-mineral filling stuff
Parameter: 17-20mm Thickness
Weight: abt. 30kg/45kg/55kg
Density: 1.2g/cm³
Shore Hardness: A65-70
Tension Strength: >= 11Mpa
Permanent Deformation: < 5%
Features:
1. Ball spotted distributed on the surface for friction function.
2. Strip groove on the reverse side to increase the friction with ground. Drain out the dirty water timely. Keep livestock house dry.
3. Combine anti-slipping, anti-static, cold insulation, hot insulation, easy cleaning, easy changing, disease controlling as an integrity.
4. More than 10 year above lifetime.

18

Estrus Monitor



- 1. Ruminating Inspecting Equipment
- 2. Estrus Inspecting Equipment

Yomo estrus inspecting equipment and ruminating inspecting equipment is the advanced dairy behavior electronic inspection system. It features with functions: dairy identification, dairy activity monitoring, Ruminating inspecting equipment, system actual function depends on the steps calculator based on the dairy log. The system can monitor the dairy behavior in 24 hours. Track and monitor dairy estrus status and their healthy situation. Systems store 2 hours statistics of activity. Estrus inspection reach 95% accuracy. Meanwhile, it inspects the slope too. It will improve the multiply situation. Lower the treatment costs. Ruminating inspection equipment can monitor disease of cattle, too.



19

Calf Feeding Equipments

Calf Specialist



YOMO feeding machine is unimaginable, more smart, more convenient, more efficient. It is optional as customer's demands to offer. One set can supply 120 heads of calves to use.
The optimum mixing combined with safe technology, actual testing parts of machinery and electric controlling systems. This guarantees the best equipments.
All parts are manufacturing to guarantee solid, durable, suitable. The mixing engine is choiced from branded manufacturer with longtime life.
The cleaning is more easier because automatic cleaning program is not only assuring efficient cleaning, but also assuring clearing of valve and milk pipe.
The air compressor is optional to enhance cleaning. The entire cleaning is high-efficient, ecological, healthy.
The intelligent controlling system offers suitable milk powder and offers best suitable milk. Machinery meter can control mixing quantity and transparent funnel can see the height clearly. The feeding animal quantity can make input by hand.

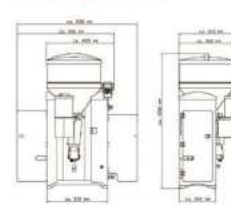


1. Milk Powder Hopper with top section
2. Rating Plate (not illustrated)
3. Water outlet
4. Milk powder outlet
5. Set electrode
6. Temperature sensor
7. Mixer (mixer jar + mixer motor)
8. Left side of the chassis; toe valve(s), training pump, mixer draining valve, + detergent container, + detergent dosing pump
9. Rear side of the chassis; control unit with boards
10. Hand-held terminal
11. Main switch
12. Connection screw for equipopotential bonding
13. Supply electrode
14. Spot electrode for 250 ml portions
15. Right side of the chassis; water valve, electronic boiler, safety temperature limiter
16. Water supply



14

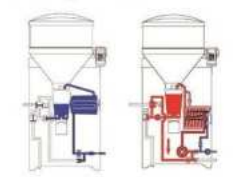
Calf Specialist



Heat exchanger/Boiler circuits



Product range and features



Max. number of calves per year	100	100	Max. number of calves per year	100	100
Max. number of feeding stations	2	4	Max. number of feeding stations	2	4
Max. number of pre-feeding stations	20-30	30	Max. number of pre-feeding stations	20-30	30
Heating capacity	0.5 kW	3.2 kW	Heating capacity	0.5 kW	3.2 kW
Water draining system	No	Yes	Water draining system	No	Yes
Fully automatic heat exchanger and boiler cleaning	No	Yes	Fully automatic heat exchanger and boiler cleaning	No	Yes
Water flow measurement	Yes	Yes	Water flow measurement	Yes	Yes
Optional devices	None	PLC, USB	Optional devices	None	PLC, USB
Electrical Requirement	230V / 50Hz / 15kW		Electrical Requirement	230V / 50Hz / 15kW	

Max. number of calves per year	100	100	Max. number of calves per year	100	100
Power heater	Standard	Professional	Power heater	Standard	Professional
Mixer motor	Standard	Professional	Mixer motor	Standard	Professional
Electric boiler in the mixer	1	2	Electric boiler in the mixer	1	2
Milk Pump	120 ml	200 ml	Milk Pump	120 ml	200 ml
Circulation pump in the heat exchanger	Standard	Professional	Circulation pump in the heat exchanger	Standard	Professional
Heat exchanger capacity	None	2.2 liter	Heat exchanger capacity	None	2.2 liter
Portion size	300 ml	Flexible between 250 and 300 ml	Portion size	300 ml	Flexible between 250 and 300 ml
Main switch	Yes		Main switch	Yes	

15

Skype: asiaking_vet@hotmail.com
Attn: Mr. will

Whatsapp: 0086-15510633055
Personal Cell: 0086-010-15510633055



YUTIAN FUTAI INTERNATIONAL TRADE CO.,LTD.

Room 502, Unit 5, Building No. 9, Huadu Mansion, Yutian County, Tangshan City,
Hebei Province, P.R.China 064100
Tel: 86-010-15510633055 / Fax: 86-0315-6351550
E-mail: asiaking_vet@163.com

Manure Handling Equipments

Manure Scraper

System includes 5 parts:
driving unit, auto controlling box, wheels, chains or steel wire rope, scraping board.



- Auto Controlling Box:**
1. Easily operate by hand or automation
 2. Digital display, Matched sensors
 3. Frost-protection device existing
 4. Optional devices
 5. Automatic closed and restarting protection system



Wheel: 48cm*48cm
Wheels assembled on the 4 corners of cattle manure aisle including fixing materials.

Chain: Heavy-Duty Chain
Thickness: 13mm
Strong, durable, be able to connect with U type steel



20

U-Type Trench

Manure Scraper



Working Principle

The scraping way is towards single way. The direction is variable. Using frequency-conversion gear motor to drive chains making repeated working.

- A: When do manure scraping, main board tightly close to ground, side board closed to the side wall clean out manure to gutter
- B: Main board work reversely. Main board rise up and side board closes. When A work finished, the motor reverse do the same work to clean as B.



21

Ventilation And Cooling Equipments

Fan



Cattle house ventilation is the most important interesting measures. It aims at creating and maintaining living environment of animals and people.

Ventilation basic function is removing the bad gas due to metabolism and manure fermentation, cutting the dust and bacteria out, repelling the left water vapor, offering necessary oxygen.

Natural ventilation can't effect an obvious result, especially in hot humid area in summer.

Large-size industrial fan's biggest wind speed is 50 rounds. Vertical motor with reducing speed device, frequency conversion controlling, material made by T style aerospace aluminum, 10pcs fan blades, diameter 7.2M, motor power 360kw/50kw, covering area 800m² airflow 11000, height 1000mm, weight 150kg.

CMP ventilation system use ventilation by man. When it was in design phase, calculate Maximum and minimize flowing speed according to changeable diameter structure of power, type, quantity, control system. It is personalized assembly.

CMP system is looking for an more advanced technology in ventilation area and husbandry development area to promote performance and lower power consumption.



22

Roller Shutter



1. Inside And Outside Pole: 3/4" GB hot galvanized steel pipe, entire cutting structure, 2m space reducing the blow weft and leaving out by wind.

2. Shutter Film: Thickness 0.42mm, lifetime above 5 years; weight(1m²), 500~30. Breaking Strength(N/5cm), 1250; Tensile Force(N), 200; Stripping Force(N/5cm), 40; shutter interlock stitching, connecting edges between film and

film, film and wall are treated by extra film stitching. This will increase integrity degree to reduce any force from wind entering space.

3. Shutter Axle: The axle is hollow pipe, adopted the light aluminum alloy material made. Diameter: 40mm above, Wall Thickness: 2mm above. Besides, meet the demands of film strength. It also has stiffness and distortion of stiff. The axle can roll up and roll down uniformly without incline.

4. Film Creeping Device: this device has a self-locking system. It can stop in any position of film scope. Realize the window adjustment.

5. Film Motor: rated torque 25-30N·m; double-ways self-locking.



Adopted fine galvanized plate forged to frame. Stainless steel fan blade. Full aluminum electric motor, 60 dB(A) below noise level.

23



YUTIAN FUTAI INTERNATIONAL TRADE CO.,LTD.

Room 502, Unit 5, Building No. 9, Huadu Mansion, Yutian County ,Tangshan City,

Hebei Province,P.R.China 064100

Tel: 86-010-15510633055 / Fax: 86-0315-6351550

E-mail:asiaking_vet@163.com

Cattle Care Equipments

Cattle Brush



The material is adopted high temperature resistance, anti-corrosion, strong nylon material and imported speed reducing motor. High efficient, ecological. Lifetime more than 20 years. Brush of kernel can reach above than 5 years. Dairies can clean themselves, reduce stress and parasite. Boost blood circulation, reduce stress from head, back, tail. The brush contains: fixing fixing basic parts, fixing connecting parts, motor, brush. When cattles touch that, its motor starts up, run a while ,then stop.

24

Cattle Hoof Treatment Goods:



- 1.Material: wear-resistant high-density food grade polyethylene.
- 2.Design: honeycomb surface design makes the cattle hoof open at the biggest limit. Guarantee the hoof treatment medical area.
- 3.Optional Size: 200*90*15CM, 280*90*15CM
- 4.Volume: 200L or 280L.
- 5.Suggestion For: beef, dairy, sheep.



- ◆Manufacturing Material: 3.2m³ medical showing container, stainless steel made.
- ◆Assembly Position: Assembly at the gate of cattle house.
- ◆Dosage: 3-7 times per week.
- ◆Precaution Treatment: 1 time per week. Through our research, we found that cattles can be fully treated hoof infection.
- 1.Strong medical shower spray hoof and heel. Deeply clean the complex corners of cattles.
- 2.Length design can be helpful for cattle walking through, guarantee the deep clean and penetrating remedy.
- 3.Fiber the solid stains. The pool continuing to supply medical liquid for water container. Guarantee the all cattles remedy.
- 4.No hand contacting— entire cleaning and adding water is finished automatically. Very solid.
- 5.Take advantages of all sterilization liquid and medical liquid. Ecological and no waste. Save water: 4L (1 gallon) /5 heads

25