



# INOX CONNECTORS

STAINLESS STEEL MOUNTINGS

2020 CATALOGUE

**GASFEDERN – GAS SPRING – MOLLA A GAS**



Discover  
the potential

UNICERT  
ISO 9001:2015



# About Our Company

From Tradition  
to Innovation

**TGS started its industry adventure in early 70s by the producon of machining products for gas springs and various fields of industry. Our early gas spring producon steps started in 1992.**

Day afer day we improved our manufacturing technologies and machinery equipments and caught world standards. In 2008 we started exporting our products to european countries and established our export company Tunatek Ltd. Co. for organizing our all export operations.

More than a quarter century of experience in gas spring producon ensures us self-confidence to provide our products all high level markets. Today we manufacture 5 different series in steel and stainless steel materials and dozens of different functions. Customers from about 50 countries and dozen of different industrial sectors rely on different kinds of gas springs made by TGS.



# Quality Policy



All our products are designed, manufactured and delivered according to the most strict quality standards. Our experienced and specially trained employees monitor the adherence to our quality criteria in every phase of the production process. Tunalift gas springs are manufactured with the highest quality, environmentally friendly materials.

We are certified in accordance with DIN ISO 9001:2015. Our quality program starts with implementing strict quality controls on our purchase transactions. Permanent quality is guaranteed due to the uncompromisingly monitoring of raw materials, an aggressive testing program and a redundant quality control program throughout the production process.

TGS products are continuously tested to ensure reliability, long life and over all product safety for your highest satisfaction. Using our test and development laboratory, products and technology are constantly being improved.



# INOX CONNECTOR INDEX



**BA TYPES** [Page 7](#)



**BJ TYPES** [Page 8](#)



**YA TYPES** [Page 10](#)



**YB TYPES** [Page 11](#)



**YC TYPES** [Page 12](#)



**MG TYPES** [Page 13](#)



**FAS TYPES** [Page 15](#)

# ACCESSORY INDEX



**PA TYPES** [Page 17](#)



**N TYPES** [Page 19](#)



**DS TYPES** [Page 18](#)



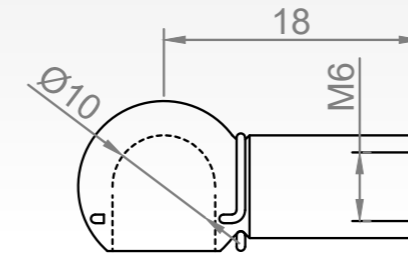
**CFS TYPES** [Page 20](#)



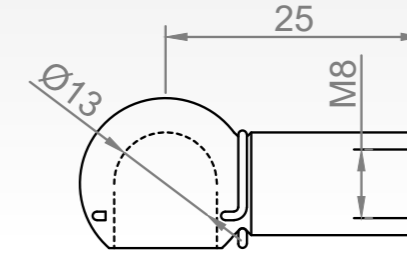
**TYPE: BA**  
BALL SOCKET CONNECTORS

# BALL SOCKET BALL JOINT

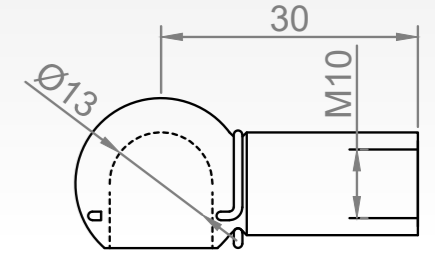
TGS INOX Ball Socket and Ball Joint collections are made from Stainless Steel material (SAE304). Also, SAE316 material available as optional.



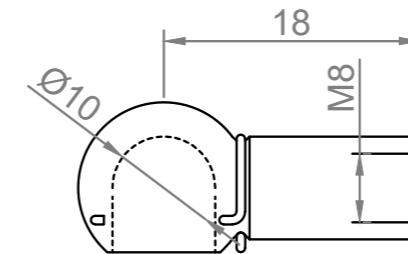
FEATURES		B001S
Material Information	Stainless steel / AISI 304	
<b>B001S/1</b>	AISI 316	
Compatible With	A15, A18, D15, D18, W18	
Components	B001S; DS10S	
Unit Weight	0,012 KG	



FEATURES		B006S
Material Information	Stainless steel / AISI 304	
<b>B006S/1</b>	AISI 316	
Compatible With	A22, S22, W22	
Components	B006S; DS13S	
Unit Weight	0,026KG	



FEATURES		B074S
Material Information	Stainless steel / AISI 304	
<b>B074S/1</b>	AISI 316	
Compatible With	A27, A28	
Components	B074S; DS13S	
Unit Weight	0,030KG	



FEATURES		B026S
Material Information	Stainless steel / AISI 304	
<b>B026S/1</b>	AISI 316	
Compatible With	A22	
Components	B026S, DS10S	
Unit Weight	0,026KG	

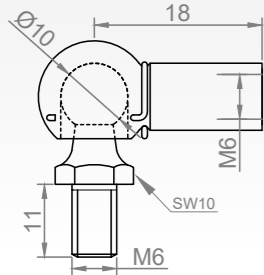




**TYPE: BJ**  
BALL JOINT CONNECTORS

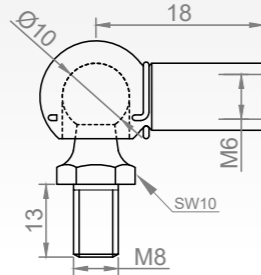
# EYE FITTINGS

TGS INOX Eye Fittings collection is made from Stainless Steel material (SAE304). Also, SAE316 material available as optional.



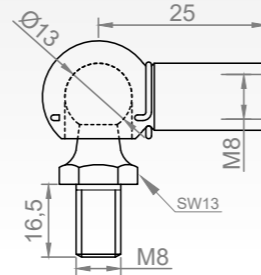
**FEATURES J032S**

Material Information	Stainless steel / AISI 304
<b>J032S/1</b>	AISI 316
Compatible With	A15,A18
Components	B001S;DS10S; PA01S
Unit Weight	0,029 KG



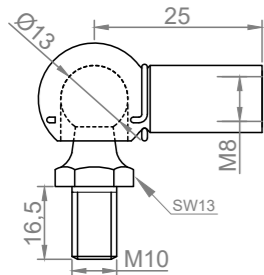
**FEATURES J033S**

Material Information	Stainless steel / AISI 304
<b>J033S/1</b>	AISI 316
Compatible With	A15,A18
Components	B001S; DS10S; PA45S
Unit Weight	0,029 KG



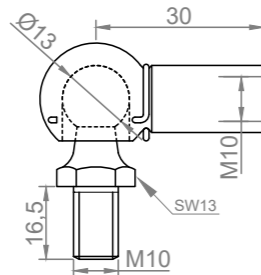
**FEATURES J113S**

Material Information	Stainless steel / AISI 304
<b>J113S/1</b>	AISI 316
Compatible With	A22, A28
Components	B006S; DS13S; PA54S
Unit Weight	0,049KG



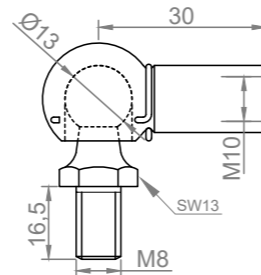
**FEATURES J174S**

Material Information	Stainless steel / AISI 304
<b>J174S/1</b>	AISI 316
Compatible With	A22,A28
Components	B006S; DS13S; PA55S
Unit Weight	0,049KG



**FEATURES J173S**

Material Information	Stainless steel / AISI 304
<b>J173S/1</b>	AISI 316
Compatible With	A28
Components	B074S; DS13S; PA55S
Unit Weight	0,054KG



**FEATURES J196S**

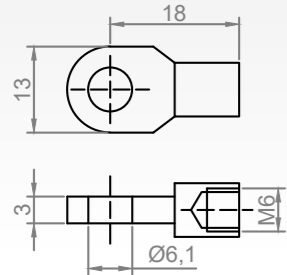
Material Information	Stainless steel / AISI 304
<b>J196S/1</b>	AISI 316
Compatible With	A21, A28
Components	B074S; DS13S; PA54S
Unit Weight	0,054KG





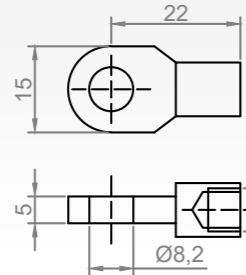
# TYPE: YA

## CLEVIS CONNECTORS



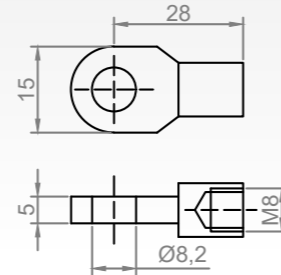
### FEATURES **Y001S**

Material Information	Stainless steel / AISI 304
<b>Y001S/I</b>	AISI 316
Compatible With	A15,A18
Components	Y001S
Unit Weight	0,008 KG



### FEATURES **Y004S**

Material Information	Stainless steel / AISI 304
<b>Y004S/I</b>	AISI 316
Compatible With	A15,A18
Components	Y004S
Unit Weight	0,009KG



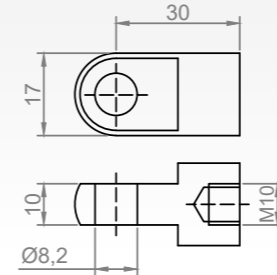
### FEATURES **Y005S**

Material Information	Stainless steel / AISI 304
<b>Y005S/I</b>	AISI 316
Compatible With	A21
Components	Y005S
Unit Weight	0,013KG



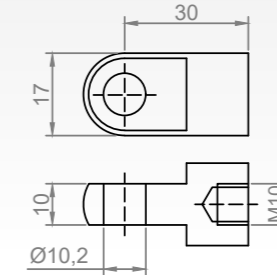
# TYPE: YB

## CLEVIS CONNECTORS



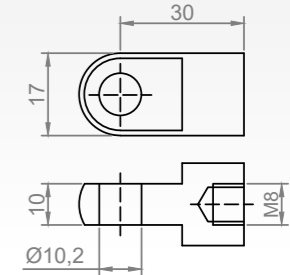
### FEATURES **Y038S**

Material Information	Stainless steel / AISI 304
<b>Y038S/I</b>	AISI 316
Compatible With	A28
Components	Y038S
Unit Weight	0,040 KG



### FEATURES **Y039S**

Material Information	Stainless steel / AISI 304
<b>Y039S/I</b>	AISI 316
Compatible With	A28
Components	Y039S
Unit Weight	0,040 KG



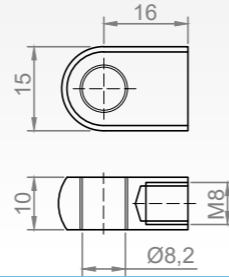
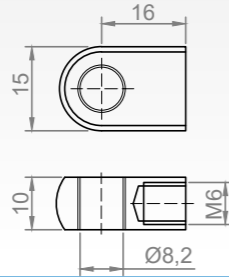
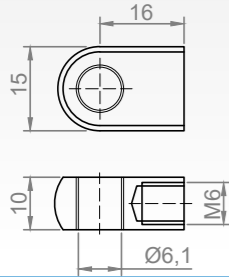
### FEATURES **Y144S**

Material Information	Stainless steel / AISI 304
<b>Y144S/I</b>	AISI 316
Compatible With	A18, A21
Components	Y144S
Unit Weight	0,040 KG



# TYPE: YC

## CLEVIS CONNECTORS



### FEATURES Y524S

Material Information	Stainless steel / AISI 304
Y524S/1	AISI 316
Compatible With	A15,A18
Components	Y524S
Unit Weight	0,016 KG

### FEATURES Y019S

Material Information	Stainless steel / AISI 304
Y019S/1	AISI 316
Compatible With	A15,A18
Components	Y019S
Unit Weight	0,016 KG

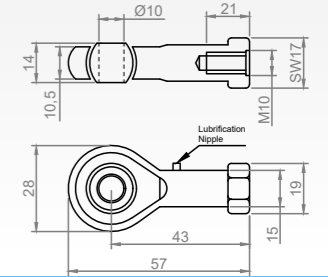
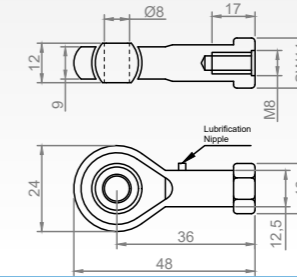
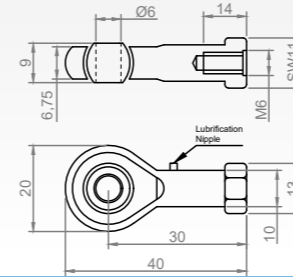
### FEATURES Y009S

Material Information	Stainless steel / AISI 304
Y009S/1	AISI 316
Compatible With	A21
Components	Y009S
Unit Weight	0,015 KG



# TYPE: MG

## SPHERIAL END CONNECTORS



### FEATURES MG53S

Material Information	Stainless steel / AISI 304
MG53S/1	AISI 316
Compatible With	A15,A18
Components	MG53S
Unit Weight	? KG

### FEATURES MG54S

Material Information	Stainless steel / AISI 304
MG54S/1	AISI 316
Compatible With	A22,A28
Components	MG54S
Unit Weight	? KG

### FEATURES MG55S

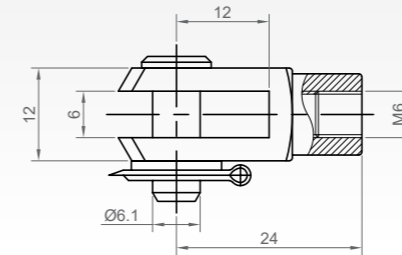
Material Information	Stainless steel / AISI 304
MG55S/1	AISI 316
Compatible With	A22,A28
Components	MG55S
Unit Weight	? KG



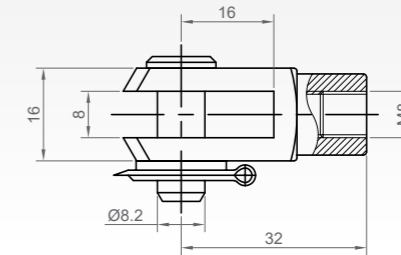
**TYPE: FAS**  
FORK CLEVIS CONNECTORS

# CLEVIS

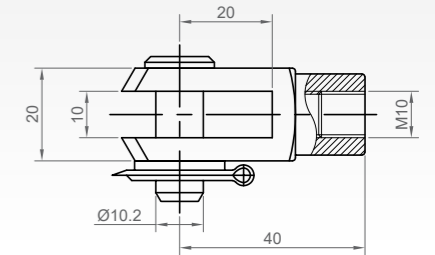
TGS INOX Clevis collection is made from Stainless Steel material (SAE304). Also, SAE316 material available as optional.



FEATURES		FS01
Material Information	Stainless steel / AISI 304	
FS01/1	AISI 316	
Compatible With	A15, A18	
Components	F001S, CFS3	
Unit Weight	0,019 KG	



FEATURES		FS02
Material Information	Stainless steel / AISI 304	
FS02S/1	AISI 316	
Compatible With	A18, A22, A28	
Components	F005S, CFS4	
Unit Weight	0,046 KG	



FEATURES		FS03
Material Information	Stainless steel / AISI 304	
FS03S/1	AISI 316	
Compatible With	A22, A28	
Components	F034S, CFS5	
Unit Weight	0,092 KG	



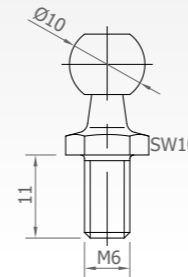




**TYPE: PA**  
**BALL STUDS**

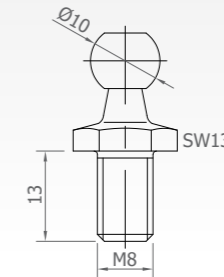
# COMPONENTS

TGS Connector accessories are made from different type of steel with 4 different surface treatments.



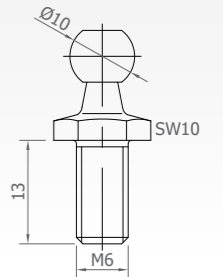
**FEATURES PA01S**

Material Information	Stainless steel / AISI 304
<b>PA01S/1</b>	AISI 316
Compatible With	B001S, B002S, B005S
Unit Weight	0,009 KG



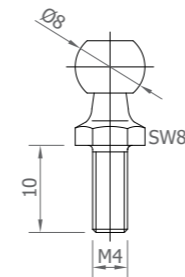
**FEATURES PA03S**

Material Information	Stainless steel / AISI 304
<b>PA03S/1</b>	AISI 316
Compatible With	B001S, B002S, B005S
Unit Weight	0,012 KG



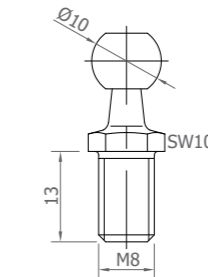
**FEATURES PA14S**

Material Information	Stainless steel / AISI 304
<b>PA14S/1</b>	AISI 316
Compatible With	B001S, B002S, B005S
Unit Weight	0,009 KG



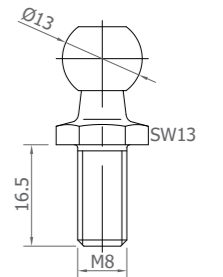
**FEATURES PA42S**

Material Information	Stainless steel / AISI 304
<b>PA42S/1</b>	AISI 316
Compatible With	B402S
Unit Weight	0,002 KG



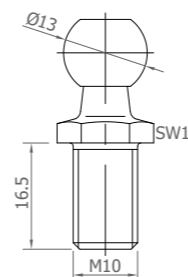
**FEATURES PA45S**

Material Information	Stainless steel / AISI 304
<b>PA45S/1</b>	AISI 316
Compatible With	B001S, B002S, B005S
Unit Weight	0,010 KG



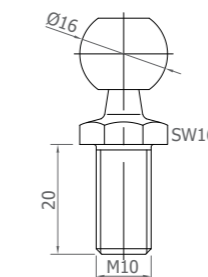
**FEATURES PA54S**

Material Information	Stainless steel / AISI 304
<b>PA54S/1</b>	AISI 316
Compatible With	B006S, B007S, B074S
Unit Weight	0,017 KG



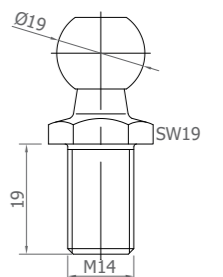
**FEATURES PA55S**

Material Information	Stainless steel / AISI 304
<b>PA55S/1</b>	AISI 316
Compatible With	B006S, B007S, B074S
Unit Weight	0,021 KG



**FEATURES PA67S**

Material Information	Stainless steel / AISI 304
<b>PA67S/1</b>	AISI 316
Compatible With	
Unit Weight	0,035 KG

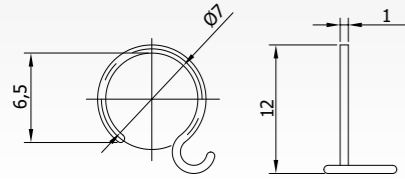


**FEATURES PA75S**

Material Information	Stainless steel / AISI 304
<b>PA75S/1</b>	AISI 316
Compatible With	
Unit Weight	0,068 KG

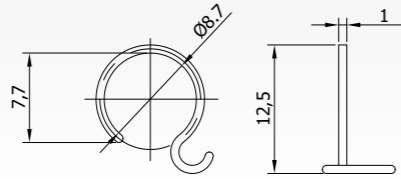


**TYPE: DS**  
SOCKET CLIPS



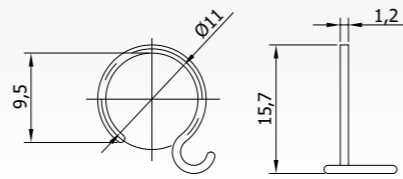
**FEATURES DS08S**

Material Information	Stainless steel / AISI 304
<b>DS08S/1</b>	AISI 316
Compatible With	B402S
Unit Weight	0,00021 KG



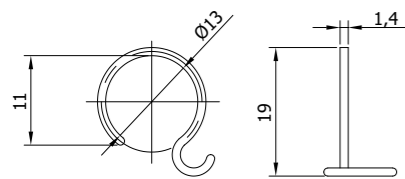
**FEATURES DS10S**

Material Information	Stainless steel / AISI 304
<b>DS10S/1</b>	AISI 316
Compatible With	B001S, B002S, B005S
Unit Weight	0,00024 KG



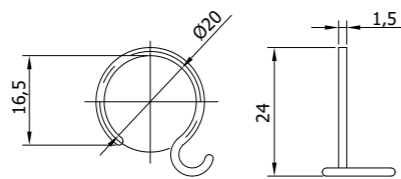
**FEATURES DS13S**

Material Information	Stainless steel / AISI 304
<b>DS13S/1</b>	AISI 316
Compatible With	B006S, B007S, B074S
Unit Weight	0,00046 KG



**FEATURES DS16S**

Material Information	Stainless steel / AISI 304
<b>DS16S/1</b>	AISI 316
Compatible With	B125S
Unit Weight	0,00077 KG

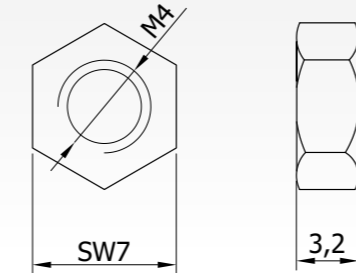


**FEATURES DS19S**

Material Information	Stainless steel / AISI 304
<b>DS19S/1</b>	AISI 316
Compatible With	B401S
Unit Weight	0,0011 KG

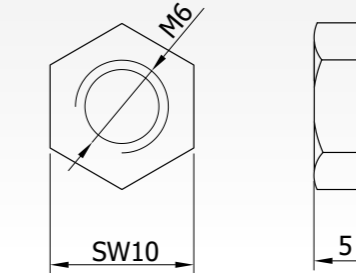


**TYPE: N**  
NUT



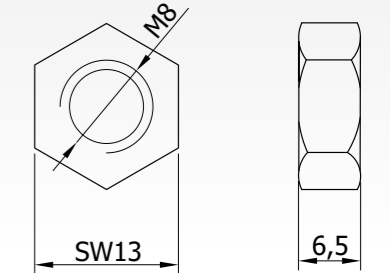
**FEATURES N02S**

Material Information	Stainless steel / AISI 304
<b>N02S/1</b>	AISI 316
Compatible With	PA42S
Unit Weight	0,00081 KG



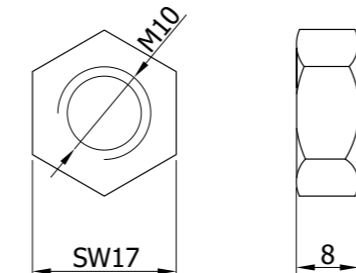
**FEATURES N04S**

Material Information	Stainless steel / AISI 304
<b>N04S/1</b>	AISI 316
Compatible With	PA01S, PA14S
Unit Weight	0,0025 KG



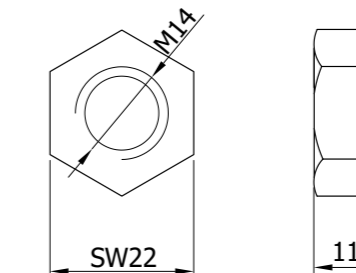
**FEATURES N05S**

Material Information	Stainless steel / AISI 304
<b>N05S/1</b>	AISI 316
Compatible With	PA03S, PA45S, PA54S
Unit Weight	0,0052 KG



**FEATURES N06S**

Material Information	Stainless steel / AISI 304
<b>N06S/1</b>	AISI 316
Compatible With	PA55S
Unit Weight	0,0116 KG

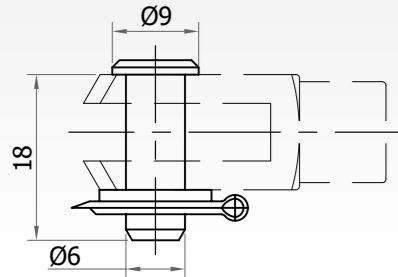


**FEATURES N08S**

Material Information	Stainless steel / AISI 304
<b>N08S/1</b>	AISI 316
Compatible With	PA74S
Unit Weight	0,025 KG

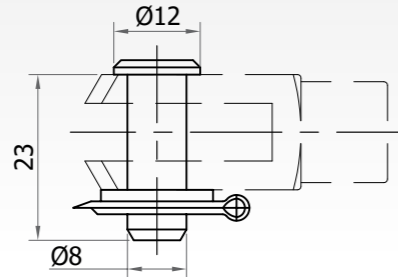


## TYPE: CFS FORK CLIPS



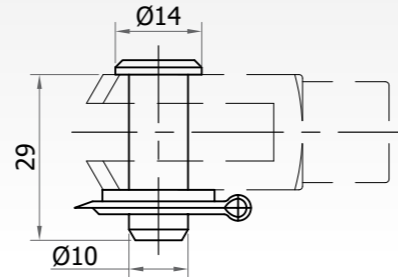
### FEATURES CFS3

Material Information	Stainless steel / AISI 304
CFS3/1	AISI 316
Compatible With	F001S
Unit Weight	0,00624 KG



### FEATURES CFS4

Material Information	Stainless steel / AISI 304
CFS4/1	AISI 316
Compatible With	F005S
Unit Weight	0,01223 KG




### FEATURES CFS5

Material Information	Stainless steel / AISI 304
CFS5/1	AISI 316
Compatible With	F034S
Unit Weight	0,02397 KG



*"Feel Safe!"*  
www.tunalift.com

 Bursa, Turkey

 +90 224 211 44 73

 info@tunalift.com

 www.tunalift.com