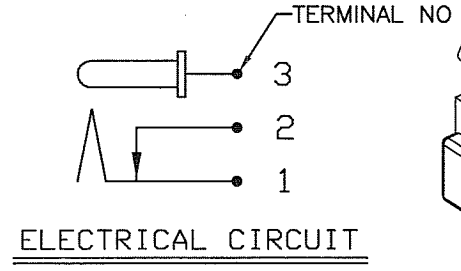
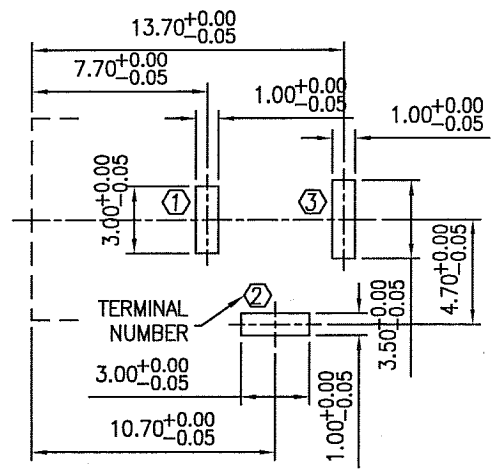
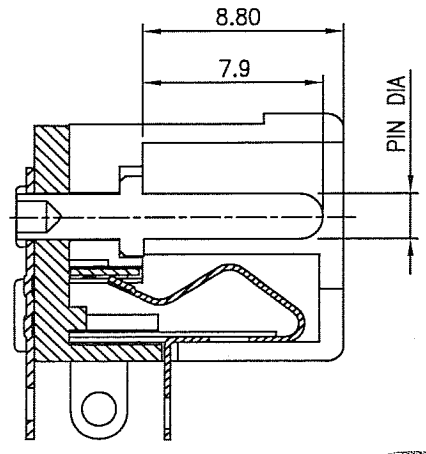
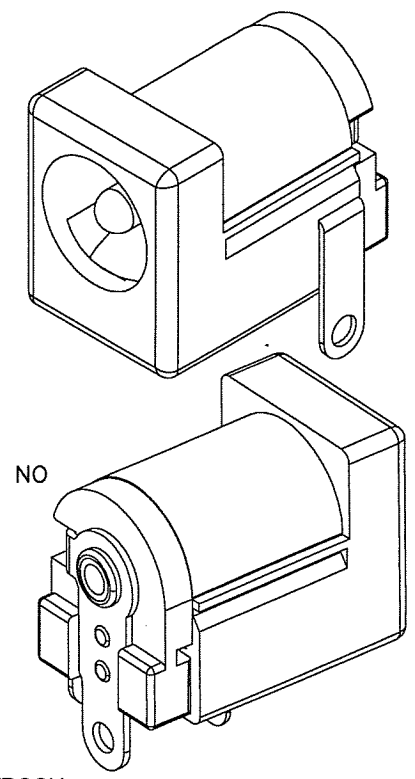
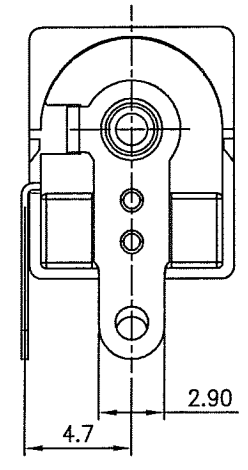
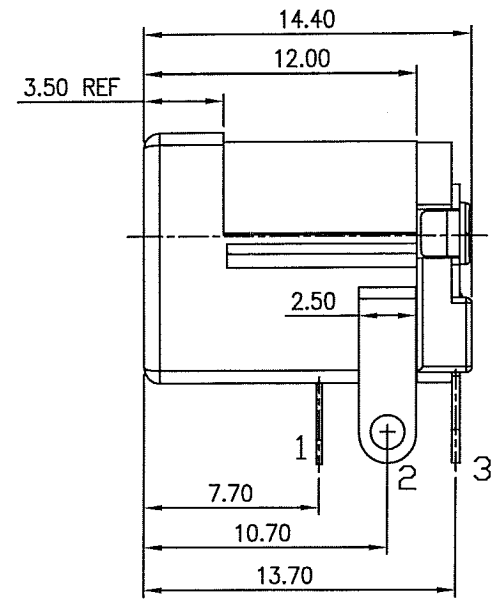
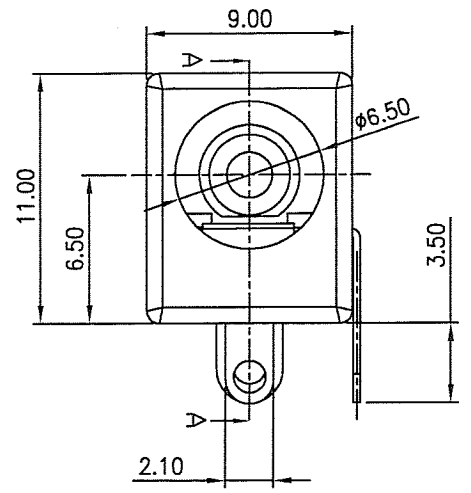


REV	MODIFICATION	DATE	DRAW



JAKSX-E03TTB00X
 Comply to SONY SS-00259
 Terminal Plating :
 T=Tin
 Center Pin mode :
 A : PIN DIA 2.00mm.
 B : PIN DIA 2.45mm.

Recommend P.C.B Layout
 (Connector Side View)
 Tolerances = ±0.05

ORDERING INFORMATION:

PIN	TOLER.	PART
2.00	±0.05	JAKSX-E03TTB00A
2.45	±0.05	JAKSX-E03TTB00B

DIMENSION IN mm [Inch]		PROD. SPEC.
.X±0.30	X.'± 5'	APPROVE <i>Gamy</i>
.XX±0.20	.X'± 3'	CHECK <i>[Signature]</i>
.XXX±0.10	.XX'± 1'	DRAW <i>[Signature]</i>

KINGFONT PRECISION INDUSTRIAL CO., LTD.	
TITLE DC POWER JACK	CUSTOMER DRAWING
FILE NO. KFP-135	DWG NO. JAKSX-E03TTB00X
SIZE A4	PROJ. SHEET 1 / 1
SCALE 3:1	REV A

