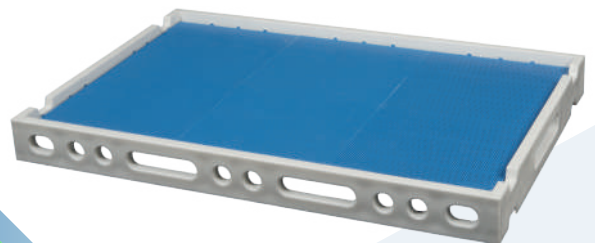
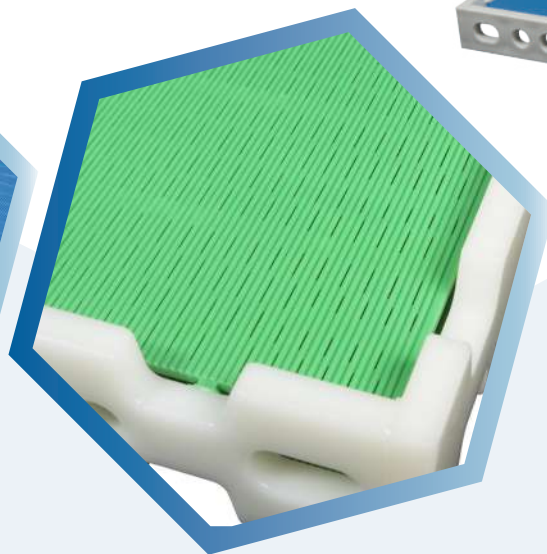
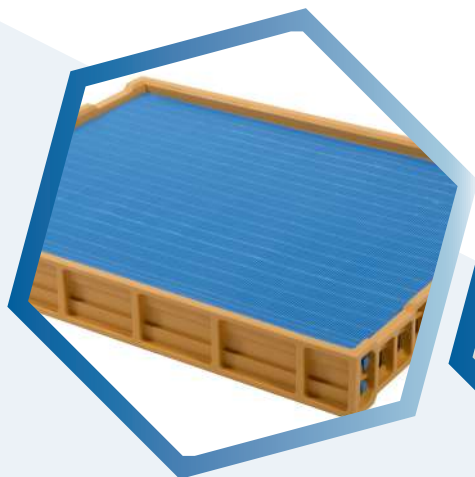




DOUBLE-SIDED PLASTIC DRAINING TRAYS



Developed by Servi Doryl since 1993 to mechanise and secure the turning of cheese in stack, the double-sided plastic draining trays can replace stainless steel and aluminium trays.

They work for all cheese shapes and can be adapted to mechanised lines.

RANGE

- Double-sided trays equipped with draining mats
- Multifformat trays with integrated mats
 - Dedicated trays

USE

Moulding and draining of cheeses in moulds, block-moulds of all shapes

MATERIALS

Injected or boiled copolymer polypropylene parts

DIMENSIONS

- 500 x 622 mm internal
- 500 x 652 mm internal
- 469 x 718.5 mm internal
- 469 x 958 mm internal
- Other dimensions on request



Lightweight and easy to use trays
Excellent product durability
Fast return on investment



Channelled whey flow
Good ventilation on all the surfaces of the cheese



Possible to turn in stacks or individually
Safe movement on mechanised chains



Recyclable plastic materials, controlled recycling circuits
Possibility to take back trays at the end of their life
Reduction of the environmental footprint

