

Fama Paint

eco-friendly paints for a high quality of life



MAIN OBJECTIVES OF FAMA PAINT DEVELOPMENT

- Decorative properties – matt appearance and tactile properties;
- Painting properties – paint roller, flat brush or spraying;
- Maintainability – local repair and minor renewal;
- Convenience in operation – resistance to washing;
- Color stability at coloring

We have resolved all raised problems and have created a range of eco-friendly, innovative and cost effective products

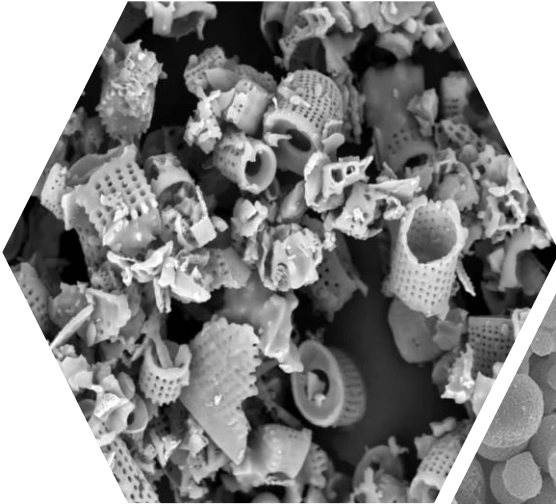


BASIC PROPERTIES OF THE ENTIRE RANGE OF PAINTS

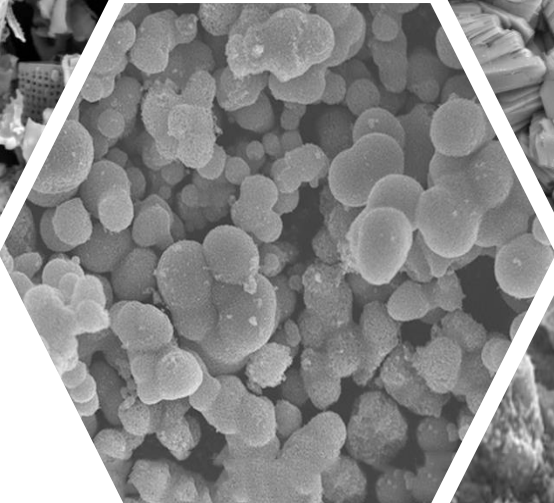
- Balanced formulas with unique fillers;
- Raw materials from the leading European suppliers;
- Water-based 100% acrylic core-shell dispersion;
- Contain no solvents, phosphates, styrene or plasticizers, safe for the living space ecology;
- First class wet scrubbing, excellent surface resistance to washing;
- Blocking capacity when painting over resinous condensates and spirit markers;
- No tackiness and low dirt retention properties;
- Adhesion to galvanized steel.



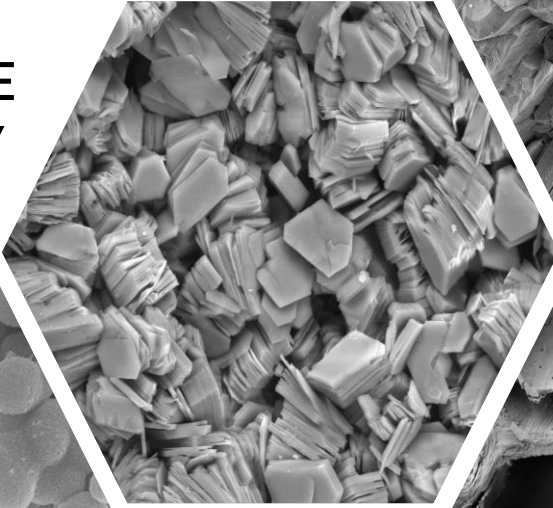
UNIQUE FILLERS



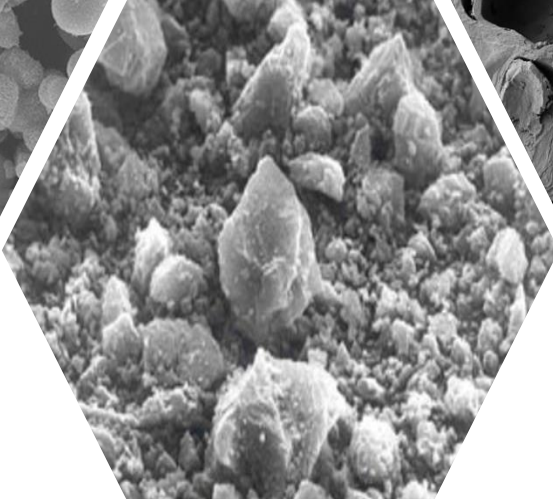
DIATOMACEOUS
EARTH



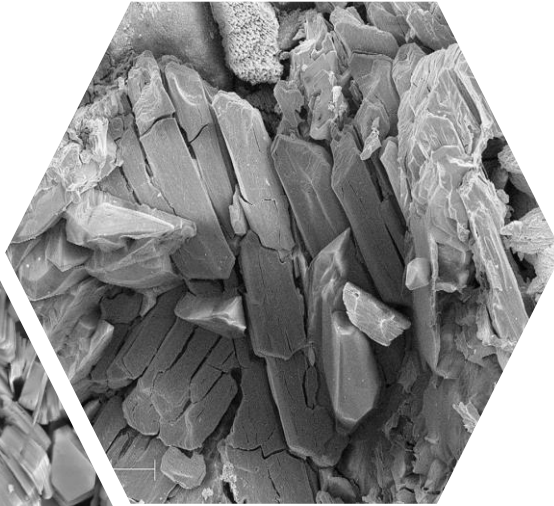
TITANIUM
DIOXIDE



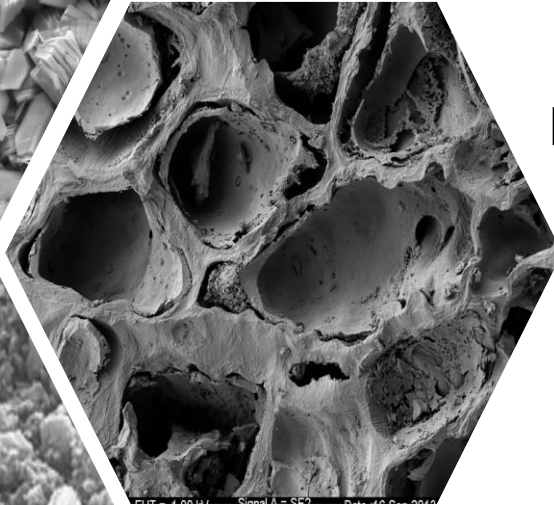
WHITE
CLAY



GROUND
MARBLE



NATURAL
TALC



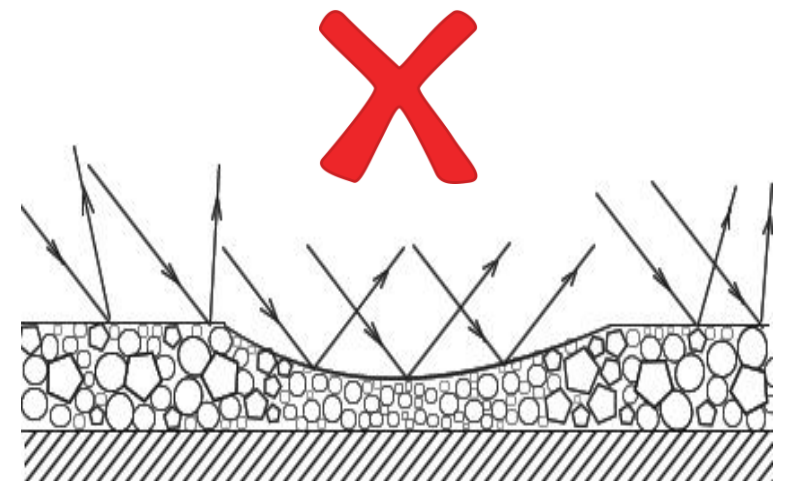
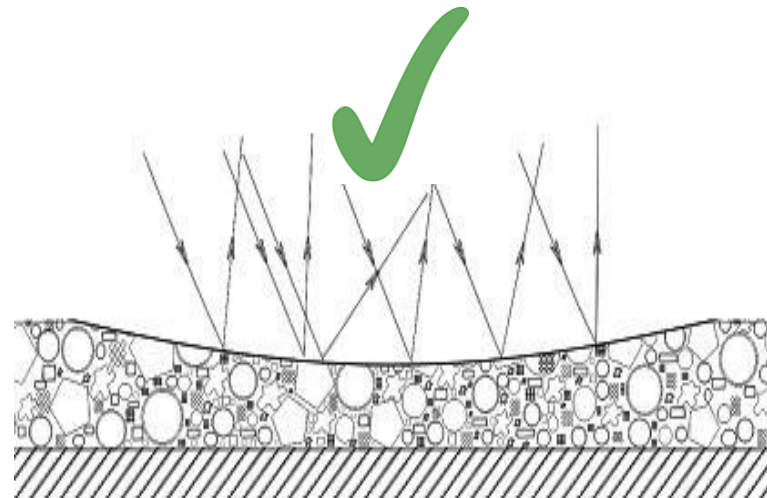
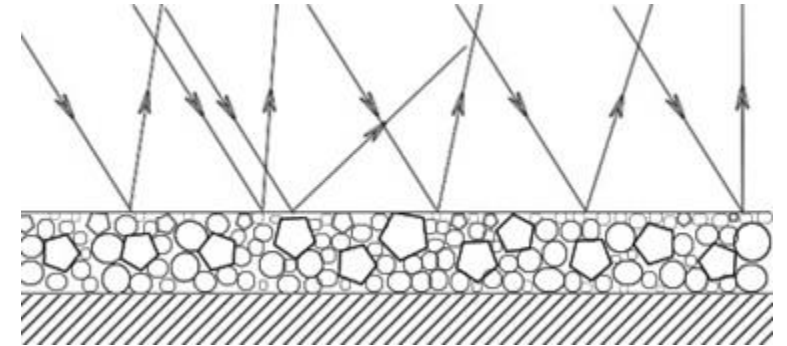
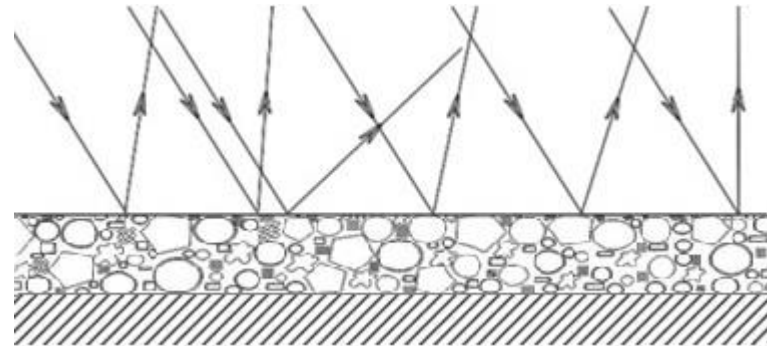
OPTICAL
REFLECTOR

UNIQUE SURFACE PROPERTIES

Fama Paint

Using fillers with various particle sizes and shapes enables maintaining the surface capability of dissipating light and minimizing the risk of glossing if the roller slips, the paint foams or the surface is subject to wet cleaning.

Conventional matt paints





PERFECT PAINTING PROPERTIES

- Convenient application for professional painters and amateurs in repair;
- Easily spread by a roller, do not foam, do not splash;
- Do not form optical abutting lines if applied in segments;
- Minimize glossy spots at lateral lighting if the roller slips;
- May be applied by airless spraying, do not clog nozzles and filters;
- Locally repairable and improvable;
- Are not lustrous and very low glossing at wet scrubbing;
- Cover minor application defects;

**STRICT
MANUFACTURING
CONTROL**

Glossiness

Viscosity

**Reducing
power**

**Whiteness
index**

Density

**Dry
residue**



HANDY EASY TO USE PAINT FOR PRACTICAL PERSONS

- ✓ **What is “handy”? – Handy is easy to use, affordable, practical and masterful**
- ✓ **HANDY meets all these definitions!**
 - Cost effective matt acrylic paint for amenity and commercial spaces with an average or high traffic flow;
 - Excellent value for money to complete any interior tasks;
 - Suits for professional painters and amateurs in repair;

HANDY APPLICATION

Substrates to be painted:

- ✓ Concrete, brick, plywood, galvanized steel, medium density fibreboard, wood chip board, oriented strand board, plasterboard, non-woven paintable wallpaper, painting glass-fibre mats, as well as puttied and plastered surfaces indoors.
- ✓ Industrial ceilings with open utility systems (ventilation and fire-fighting systems)

Spaces to be painted:

- ✓ Living and commercial spaces with an average and high operating load, namely, bedrooms, children's rooms, kitchens, entrance halls, common areas, health care facilities, educational institutions, hotels, restaurants, cafes, industrial enterprises, and warehouses.



SNOW WHITE PERFECT MATT WHITE COLOR

**SNOW
WHITE**

- ✓ **Excellent coverage rate for a quick and guaranteed coloration of contrastive walls into white tints.**
- ✓ **Perfect solution for repainting a dark surface with a white tint**
- High-quality matt acrylic paint to complete any tasks in the interior and industrial design;
- Contains flash rust inhibitors, blocks the appearance of rust on the surface when painting over heads of self-tapping screws during the installation of plasterboards or sheeting material;
- Has an elevated wear-resistance and water repellency due to the wax dispersion.

SNOW WHITE APPLICATION

Substrates to be painted:

- ✓ Concrete, brick, plywood, galvanized steel, medium density fibreboard, wood chip board, oriented strand board, plasterboard, wood, non-woven paintable wallpaper, painting glass-fibre mats, as well as puttied and plastered surfaces indoors.
- ✓ Industrial ceilings with open utility systems (ventilation and fire-fighting systems).

Spaces to be painted:

- ✓ Living and commercial spaces with an average and high operating load, namely, bedrooms, children's rooms, kitchens, entrance halls, common areas, health care facilities, educational institutions, hotels, restaurants, cafes, industrial enterprises, and warehouses.
- ✓ Any spaces and common areas where frequent wet cleaning of walls is required.





FRONT FACADE

FRONT FACADE SUPERB MATT FACADE

- ✓ Attractive matt facade at any illumination
- ✓ Wide range of operating temperatures, the coating will not get sticky when heated in the sun and will not become fragile at severe frost
- ✓ Self-cleaning effect, most atmospheric precipitation is washed with rain
- Contains complex biocide almost non-washable with rain, features fungicidal and algicidal activity, securely protects the facade against fungi, molds and algae;
- Guarantees an excellent vapor permeability, ensures a quick moisture transfer from the substrate to the environment, minimizes cracking and deterioration of the paint coating in the off-season.

FRONT FACADE APPLICATION

Substrates to be painted:

- ✓ Natural and artificial stone, concrete, brick, putted and plastered surfaces when performing facade works.

Building structural elements and spaces

- ✓ Facades, ledges, window splays, and other components of buildings and facilities
- ✓ Pedestals of buildings and enclosures (provided that hydraulic insulation, perimeter walk and storm water drains are available).
- ✓ Spaces in cellars and basements with a risk of the mold attack due to a poor ventilation.



SUMMARY TABLE OF PARAMETERS

FAMA PAINT	HANDY	SNOW WHITE	FRONT FACADE
Coverage rate class	2	1	2
Wet scrubbing class	1	1	Not rated
Application rate, 2 layers, roller	1 liter per 6-7 meters or 150-160 ml per m ²		
AIRLESS	yes	yes	yes
Glossiness	2	3	2
Reduced "writing effect"	no	yes	no
Disinfection	yes	yes	Not rated
For wet areas	no	yes	Not rated
Substrate to be painted	mineral	mineral + wood	mineral
Use	interior	interior	facade
Tack-free drying	1 hour	1 hour	1 hour
Complete drying	7 days	7 days	7 days
Price per m ² , 2 layers	From 105 Roub./m ²	From 167 Roub./m ²	From 112 Roub./m ²
Application rate, primer	Up to 20 m ² per 1 liter		
Price per m ² , primer	From 18 Roub./m ²		